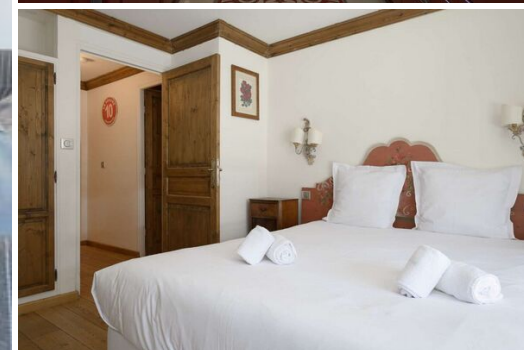
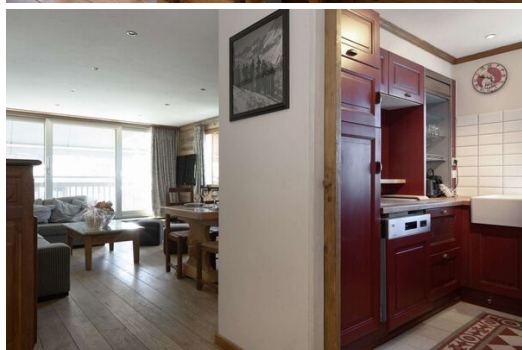


# Private apartment in Courchevel 1650

France, Courchevel, Courchevel 1650

Apartment - REF: TGS-A1918



N° Bedrooms: 5  
ski-in/ski-out

N° Bathrooms: 5  
Fireplace

N° People: 10  
Dishwasher

Parking  
TV

M² built: 120 m²  
Washing machine

Exposure: South  
Store Room

Floor: 5  
Distance to ski lift: 100m

Wifi  
Distance to centre: central

## Activities in resort

Skiing/Snowboarding

Cycling

Cross country skiing

Golf

Hiking

Mountain-Biking

Riding

Sailing

Beautiful appartement located in the center of Courchevel Moriond offering a south and west exposure and an amazing view on the surrounding moutains.

120 sqm - 10 people - Courchevel 1650 - ski-in/ski-out

It is composed as follows:

- An entry,
- Living room and living room with corner balcony
- Fully equipped kitchen
- A double room with access to the balcony, shower and toilet, safe
- A room with 2 single beds (possibility of making a double bed), safe, shower room, separate toilet,
- A double room
- One bedroom with bunk beds, shower room
- A double room with twin beds, shower room with hammam, toilet
- Laundry room with dryer, washing machine, sink, fridge with freezer.

- Independent toilet

2 parking spaces in a closed garage

2 ski lockers

WIFI







