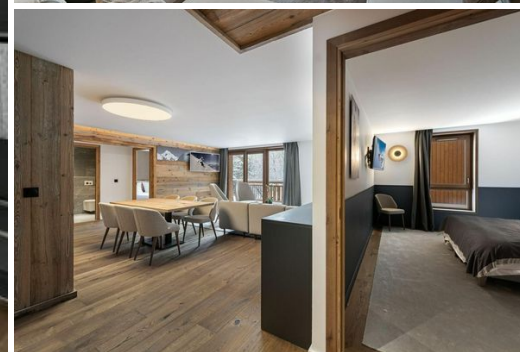


A three bedroom apartment in Courchevel 1550 Village

France, Courchevel, Courchevel 1550

Apartment - REF: TGS-A1966



N° Bedrooms: 3
Distance to centre: central

N° People: 8

Parking

M² built: 119 m²

Wifi

TV

Ski Room

Distance to ski lift: 500m

Information Apartment in Courchevel 1550 Village

- N° of people: 8
- M² built: 119 m²
- Terrace
- 3 Bedrooms
- 3 Bathrooms
- Parking
- Wifi
- Ski-room

Apartment Courchevel - Village (1550) for rental

- Distance from the center : 300 m
- Closest ski slope : Grangettes

- Distance from the slopes : 20 m
- Distance to ski school : 450 m
- Closest ski lift : Grangettes
- Distance from ski lift : 300 m

The apartment is located in a brand new luxury residence in the Gravelles district of Courchevel Village. Its location is ideal, as it is just a few steps from the slopes of the largest ski area in the world.

The apartment has a contemporary feel with neutral colours that bring finesse, such as the grey on the furniture and the thick carpet in the living room. This decoration combines perfectly with the strong presence of wood which brings warmth and reminds us that we are in a mountain building. The volumes are generous as in the living room with the kitchen which opens on the living room and which gives this very convivial space.

Three bedrooms make up the apartment, one of which is a family room with a cabin room with bunk beds, and two double rooms, one of which is an ensuite, which brings the capacity to 6 adults and 2 children. Wood is also present in the rooms, this time with brighter colours offering very cosy places.

This apartment is the ideal place for a family wishing to stay in a high standard flat, with beautiful volumes, all in a privileged location.

Family bedroom :

- 1 Double bed (140 x 200)
- 1 Bunk bed (two sleeps)
- Ensuite bathroom : Bathtub, Towel dryer, Single sink, Toilet

Bedroom :

- 1 Double bed (140 x 200)
- Ensuite bathroom : Shower, Towel dryer, Single sink

Bedroom :

- 1 Double bed
- Ensuite bathroom : Shower, Towel dryer, Single sink

Other areas :

- Boots heater
- Garage
- Ski room

Independent toilet : 1

- Elevator



