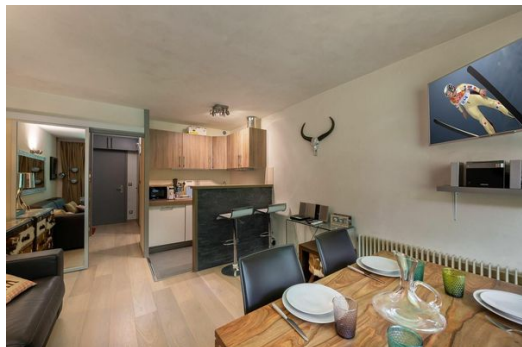


Ideally located apartment in Jardin Alpin

France, Courchevel, Courchevel 1850

Apartment - REF: TGS-A2133



N° Bedrooms: 2
TV

N° Bathrooms: 2
Ski Room

N° People: 4
Distance to ski lift: 5km

M² built: 26 m²
Distance to centre: 5km

Exposure: South

Floor: 1

Wifi

ski-in/ski-out

Information Apartment in Jardin Alpin, Courchevel 1850

- N° of people: 4
- M² built: 26 m²
- Terrace
- 2 Bedrooms
- 2 Bathrooms
- Floor 1
- South Facing
- Ski-room
- Ski In, Ski Out

Apartment Jardin Alpin in Courchevel 1850

- Distance from the center : 1300 m
- Closest ski slope : Jardin Alpin
- Distance from the slopes : 0 m
- Distance to ski school : 1310 m
- Closest ski lift : Verdon, Loze, Jardin Alpin
- Distance from ski lift : 1300 m

The apartment in Jardin Alpin is located in the sought-after area of the Jardin Alpin in Courchevel 1850.

Its location is ideal because it is only 10 minutes walk from the resort centre.

To move even faster in the centre, it is possible to use the cable car of the residence, open from 9am to 8pm, and to arrive directly on the snow front in just two minutes. To go skiing, simply go down to the bottom of the residence and put on your skis.

This apartment has a contemporary and chic decoration while remaining in the mountain spirit with the presence of skins and wood. The atmosphere is friendly and warm and the apartment is very well arranged. It can accommodate 4 adults thanks to the sofa bed and the bedroom which has two bunk beds.

This apartment is the ideal place for a family or a couple of friends looking for a beautifully decorated apartment on the edge of the piste and close to the resort centre.

Living area :

- Balcony
- Convertible sofa bed
- Open kitchen
- Dining room
- TV lounge

Corner area :

- Wardrobe
- 2 Bunk beds (1 sleep) (80 x 190)

Bathroom :

- Bathroom 1 : Bathtub, Towel dryer, Single sink

Independent toilet : 1

