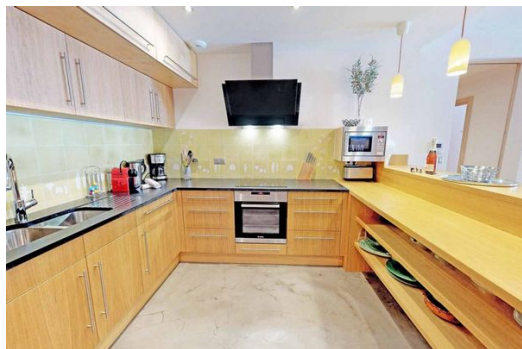


Apartment, in Méribel - Duplex 230 m²

France, Courchevel

Apartment - REF: TGS-A2300



N° Bedrooms: 7

N° Bathrooms: 4

N° People: 17

M² built: 230 m²

Wifi

ski-in/ski-out

Fireplace

Ski Room

Information Apartment, in Méribel

- N° of people: 17
- M² built: 230 m²
- Terrace
- 7 Bedrooms
- 4 Bathrooms
- Wifi
- Chimney
- Ski-room
- Ski In, Ski Out

A beautiful brand-new luxury apartment duplex located in the very heart of Meribel just 100 metres from the Doron piste with the following services provided:

- Guests met on arrival
- A Complimentary Bottle of Champagne provided for guests on arrival

- Mid-week clean
- Linen and towels
- Other services, such as additional cleaning, breakfast, childcare and shopping, can be provided on request (additional charges apply)

Meribel Apartment is comprised of two spacious apartments that share the same lockable entrance. The property is located in the very centre of the resort. All the main shops, bars and restaurants are within a stone's throw. You can walk from the back of the building to the Olympic Centre within two minutes, this location is perfect for groups looking to try everything this wonderful resort has to offer.

Accessing the world's largest ski area from this property is also effortless as the Doron piste is less than 100 metres away.

The owner of the property is an architect and has designed the property perfectly for winter holidays. They have spared no expense furnishing this property with custom furniture and high-quality appliances

The duplex comprises:

Large open plan living room, dining area and kitchen with fireplace and large French windows leading to sunny balcony

- Bedroom 1: Double bedroom
- Bedroom 2: Double bedroom
- Bedroom 3: Cabin room with set of bunk beds (no windows)
- Bedroom 4: Double room with extra single bed (internal window, no external window)
- Bathroom with shower and washbasin
- Separate WC
- Bathroom with bath, shower, washbasin
- Separate WC

and

- Large open plan living room, dining area and kitchen with fireplace and large French windows leading to sunny balcony
- Bedroom 1: Double bedroom with en-suite bathroom with bath, shower, WC and washbasin
- Bedroom 2: Double bedroom
- Bedroom 3: Cabin room with two sets of bunk beds (No windows)
- Bathroom with shower and washbasin
- Separate WC
- Private ski locker with heated boot warmers at the entrance of the apartment

Distance to Closest Ski Lift - 400 metres

Distance to Closest Ski Run/Piste - 100 metres

Distance to Village/Resort Centre - in the centre

Distance to Free Bus Stop - 60 metres



