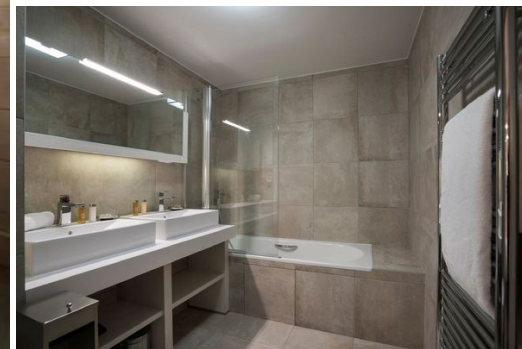
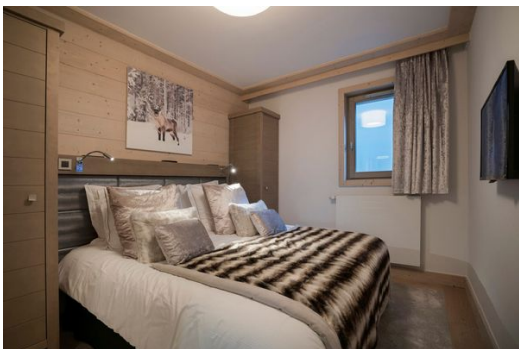


Accommodation in Courchevel village 1550 Village 80m²

France, Courchevel, Courchevel 1550

Apartment - REF: TGS-A2310



N° Bedrooms: 3

N° Bathrooms: 3

N° People: 7

Parking

M² built: 80 m²

Exposure: East

Wifi

Information Apartment, in Courchevel 1550 Village

- N° of people: 7
- M² built: 80m²
- Terrace
- 3 Bedrooms
- 3 Bathrooms
- Parking
- Floor 2
- East Facing
- Wifi

Apartment 3 Bedrooms, 80 m², equipped for 7 people,
Located on the second floor with elevator of the residence.

1 Living / dining room, fully equipped open kitchen, east balcony.

- Bedroom 1: Large bed or twin beds (90x200), TV, bathroom, toilet
- Bedroom 2: Large bed or twin beds (90x200), shower room, television
- Bedroom 3: Cabin with 2 twin beds and a bunk bed.

Garage, new residence,

Services included:

- WIFI connection, linen provided, welcome products

Services not included:

- Tourist tax per person per night,
- mandatory departure cleaning 225 euros
- No pets
- Elevator
- WIFI connection
- Garage / Parking
- Washing machine
- Dishwasher
- New
- Tumble dryer
- Television

Located in Courchevel 1550, in the center of the village, 50 meters from the snow front, close to shops and restaurants, ski school, and aquatic center "Aquamotion".

Served by free shuttles from 7:10 am to 1:30 am.

