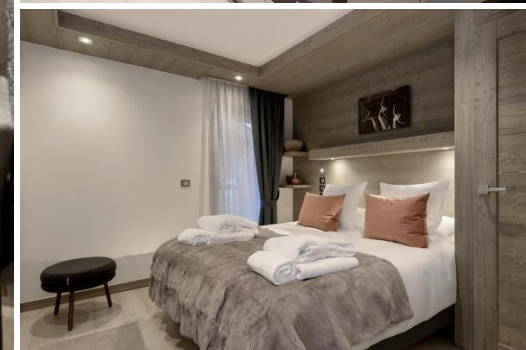
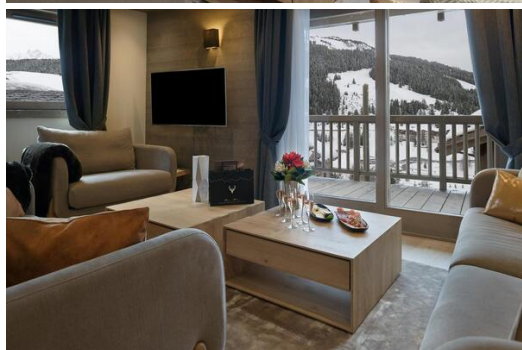


This apartment offers an area of 92 m²

France, Courchevel, Courchevel 1650

Apartment - REF: TGS-A2349



N° Bedrooms: 3
Communal SPA

N° Bathrooms: 3
Mountain view

N° People: 4
Communal lift

Parking
Dishwasher

M² built: 76 m²
TV

Terrace
Washing machine

Wifi
Ski Room

ski-in/ski-out
Distance to centre: central

Activities in resort

Skiing/Snowboarding

Cycling

Cross country skiing

Golf

Hiking

Mountain-Biking

Riding

Information Apartment, in Courchevel 1650 Moriond

- N° of people: 4
- M² built: 76 m²
- Terrace
- 3 Bedrooms
- 3 Bathrooms
- Parking
- Wifi
- Ski-room
- Ski In, Ski Out

The apartment, located on the 1st floor of a residence, offers an area of 92 m², which can accommodate up to 6 people, maximum 4 adults .

It is composed of two bedrooms with a double bed and a cabin room with a bunk bed, ideal for children. They all have an en-suite bathroom. The cosy living room has a sitting area with a television, a dining area and a fully equipped kitchen area. Finally, you will enjoy the balcony with a view of the mountains.

During your stay, you will benefit from a parking space in the private car park, a ski locker and wifi access.

- Personalized welcome
- Concierge services to meet your needs
- L'Occitane Beauty Products
- Bistrot - restaurant and bar
- Spa L'Eau Noire - jacuzzi, sauna, massage cabins
- Gilbert Sports - ski-room and ski-shop
- Private and secure underground parking
- Ski lockers



