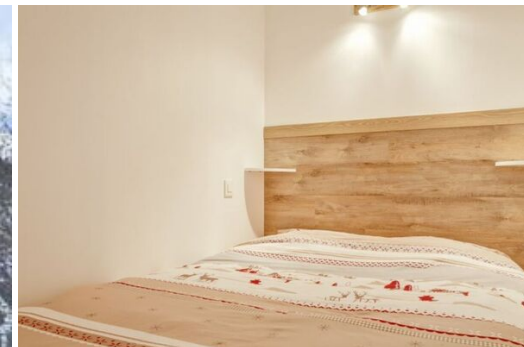


Apartment, in Courchevel 1550 Village, 42 m²

France, Courchevel, Courchevel 1550

Apartment - REF: TGS-A2366



N° Bedrooms: 2
Dishwasher

N° Bathrooms: 1
TV

N° People: 6
Washing machine

M² built: 42 m²
Ski Room

Exposure: Southwest
Distance to ski lift: 100m

Wifi
Distance to centre: central

ski-in/ski-out

Mountain view

Activities in resort

Skiing/Snowboarding

Cycling

Cross country skiing

Golf

Hiking

Mountain-Biking

Riding

Information Apartment, in Courchevel 1550 Village

A nice and cosy newly refurbished apartment for 6 person situated 100m far from the slopes.
Living room with dining area, a huge terrace facing South/East and a television.

Kitchen area with vitroceramic hobs, microwave, dishwasher, traditionnal oven, fridge and freezer.

SLEEPING ARRANGEMENT:

Cabin bedroom (without window) : 1 double bed (160x190cm)

Bedroom: 2x2 bunk beds (80x190cm)

Top bed is not suitable for children under 6 years old.

Living room: pull out bed (x2 80x190cm) can be used as a double bed

One bathroom with washing/dryer machine and one seperated toilets.

Wifi 4G connection extra charge (5Go/day)

This apartment is not suitable for people with reduced mobility.

RENTAL CONDITIONS:

Bed linen included from 15/12 until 30/04 only, otherwise with supplement.

Towels and cleaning not included available on request

Damage deposit required on arrival.

Animals not allowed.

SMALL KITCHEN

- Dishwasher
- refrigerator with freezer
- electric cooker
- Oven
- Microwave

ADDITIONAL FEATURES

- Wireless Internet (for a fee)
- TV (flat screen)
- Washing machine
- Balcony
- Ski Equipment Locker

