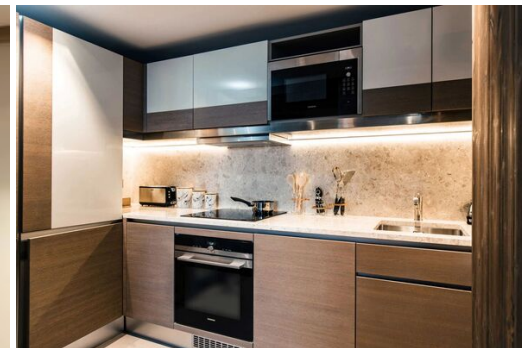


Apartment in Courchevel 1850, La Porte with Mountain View

France, Courchevel, Courchevel 1850

Apartment - REF: TGS-A2374



N° Bedrooms: 2	N° Bathrooms: 2	N° People: 4	Parking	M² built: 86 m²	Terrace	Wifi	ski-in/ski-out
Private pool	Fireplace	Jacuzzi	Sauna	Private SPA	Dishwasher	TV	Washing machine
Ski Room	Distance to ski lift: 100m	Distance to centre: central					

Activities in resort

Skiing/Snowboarding	Cycling	Cross country skiing	Golf	Hiking	Mountain-Biking	Riding	Sailing
---------------------	---------	----------------------	------	--------	-----------------	--------	---------

Information Apartment in La Porte de Courchevel, Courchevel 1850

An inspiring Alpine interiors aesthetic comes complete with balconies and lovely views.

Two-Bedroom Apartments in the French Alps present a generous 710 to 925 square feet (66 to 86 square meters) and are set on the first, second, or third floors, with views to the Mountain, inner courtyard and the street. These beautifully appointed apartments' interiors are designed by Morpheus and blend contemporary style with traditional mountain influences with exposed timber and other natural materials complemented by custom-made furniture and local artwork.

- 710 - 925 sq. ft. / 66 - 86 sq. m.
- Max guests 4 label
- Mountain and, or street views
- 2 Bedrooms label

Amenities

- Tailor-made ski-in/ski-out service at the Ski lifts in Courchevel 1850
- EUR 400 Spa credit for 5-night stays or more
- Early check-in and late check-out (subject to availability)
- Apartment upgrade (subject to availability, not over Peak Weeks)
- Welcome Pack upon arrival
- Residential Housekeeping service
- Residential GEM (Guest Experience Maker) 24/7
- Ski shop on-site
- Naturalmat organic mattresses (handmade)
- Flat-panel TV with satellite channels
- Unlimited WI-FI and iPad integrated music systems and App: Android / iPhone
- Spacious sitting area with an open-plan fully-equipped kitchen with oven, hob, microwave, fridge-freezer, dishwasher, washing machine, and ironing facilities. Coffee machine and tea-making facilities
- Two fully equipped bathrooms, with shower
- Oliófora Toiletries
- In-room safe

Key Facts

- Views to the mountains, inner courtyard and street
- Located on the first, second or third floors
- Beautifully appointed interiors individually designed with high quality specifications
- Balconies and living area
- Direct access to Spa

