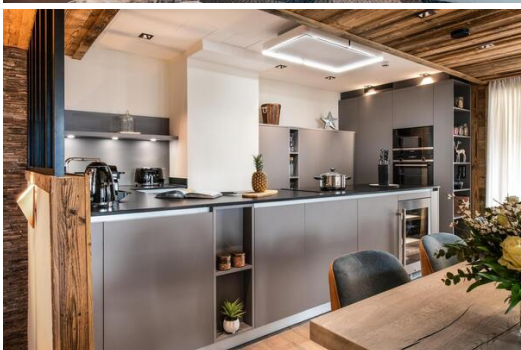


# Information Apartment in Courchevel 1650 Moriond with 163 m<sup>2</sup>

France, Courchevel, Courchevel 1650, Le Belvédère

Apartment - REF: TGS-A2423



N° Bedrooms: 5  
Communal pool  
TV

N° Bathrooms: 4  
Indoor pool  
Washing machine

N° People: 11  
Jacuzzi  
Ski Room

Parking  
Sauna  
Distance to centre: central

M<sup>2</sup> built: 163 m<sup>2</sup>  
Communal SPA

Floor: 2  
Mountain view

Wifi  
Communal lift

ski-in/ski-out  
Dishwasher

## Activities in resort

Skiing/Snowboarding

Cycling

Cross country skiing

Golf

Hiking

Mountain-Biking

Riding

Sailing

## Information Apartment in Courchevel 1650 Moriond

- N° of people: 12
- M<sup>2</sup> built: 163 m<sup>2</sup>
- 5 Bedrooms
- 4 Bathrooms
- Jacuzzi
- Hammam / Sauna
- Private pool
- Parking
- Floor 2
- Wifi

- Ski-room

Located in the heart of the village of Courchevel Moriond and its many shops and prestigious restaurants, this apartment offers direct access to the slopes of the Three Valleys.

Discover a 5 \* hotel residence with an authentic charm, a full-fledged symbol of French luxury. Inspired by the tradition of the Savoyard chalets, its elegant wooded architecture fits perfectly into its environment.

The apartment offers a living area with its open kitchen and living room opening onto a balcony.

This wonderful view will charm you. For your comfort, you will find in the residence a restaurant, a lounge bar, a swimming pool/SPA complex, a gym and a ski shop.

Your well-being is our main priority, forget about constraints and everyday life and treat yourself to a perfect holiday courtesy of our huge range of useful services both included or à la carte.

- Customized welcome
- Reception and concierge service
- L'Occitane beauty products
- Restaurants and bar
- Wellness area - swimming-pool, hammam, sauna, massage rooms, fitness
- Gilbert Sports - ski-room and ski-shop
- Underground private car park
- Ski lockers







