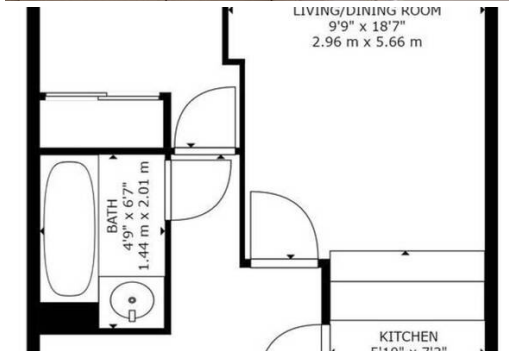


It is a nice apartment for rental with 40 m² of surface

France, Courchevel, Courchevel 1850

Apartment - REF: TGS-A2443



N° Bedrooms: 1
Jacuzzi

N° Bathrooms: 1
Ski Room

N° People: 4
Distance to ski lift: 100m

Parking
Distance to centre: central

M² built: 40 m²

Exposure: South

Floor: 2

ski-in/ski-out

Information Apartment in Center, Courchevel 1850

- N° of people: 4
- M² built: 40 m²
- Terrace
- 1 Bedrooms
- 1 Bathrooms
- Jacuzzi
- Parking spaces: 1
- Floor 2
- South Facing
- Ski In, Ski Out

It is a nice apartment of small surface. The view from the balcony is superb. It has direct access to the ski slope.

The alcove is in the entrance and well laid out.

The living room as well as the dining room are very bright. It has an open equipped open kitchen.

- Distance from the center : 100 m
- Closest ski slope : Stade de slalom
- Distance from the slopes : 0 m
- Distance to ski school : 350 m
- Closest ski lift : Verdons - Chenus - Jardin Alpin - Loze - Plantrey
- Distance from ski lift : 0 m

And the room is simple and practical and has a window overlooking the slopes.

This apartment also offers an underground private parking space.Fully fitted kitchen

- Open kitchen
- Breakfast area
- Dining room
- TV lounge
- Terrace

Bedroom :

- Wardrobe, TV1 Double bed (160 x 200)

Bathroom :

- Bathroom 1 : Bathtub, Hairdryer, Towel dryer, Single sink
- Independent toilet : 1

SERVICES

Welcome

- Reception in agency
- Bathroom products

Housekeeping & Linens

- Slippers
- Linens (towels and sheets)
- Beds made before arrival
- End of stay cleaning (except the kitchen)
- Scheduled cleaning on request (additional fee)

EQUIPMENTS

Multimedia

- Wifi
- TV

General equipments

- Elevator
- Ski locker
- Parking space

Household appliance

- Microwave & oven combination
- Fridge
- Freezer
- Vacuum
- Ironing board
- Nespresso coffee machine
- Electric hobs
- Kitchen exhaust hood
- Kettle
- Toaster
- Dishwasher

