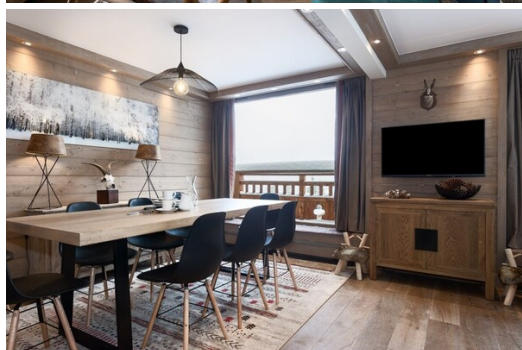


This apartment for rental is located in the Chenus district

France, Courchevel, Courchevel 1850, Chenus

Apartment - REF: TGS-A2494



N° Bedrooms: 3
Ski Room

N° Bathrooms: 3
Distance to ski lift: 500m

Parking
Distance to centre: central

M² built: 75 m²

Floor: 3

Wifi

ski-in/ski-out

TV

Activities in resort

Skiing/Snowboarding

Cycling

Golf

Hiking

Mountain-Biking

Riding

Information Apartment in Chenus, Courchevel 1850

- N° of people: 7
- M² built: 75 m²
- Terrace
- 3 Bedrooms
- 3 Bathrooms
- Parking
- Floor 3
- Wifi
- Ski-room
- Ski In, Ski Out

The apartment is located in the Chenus district, a quiet and privileged place close to the ski slopes and the resort center. Located on the third floor, the apartment offers a panoramic view of the entire resort and

its peaks. The southern exposure will allow you to enjoy beautiful sunny days on the large balcony of the apartment.

Composed mainly of different wood species, the apartment certainly follows Alpine construction methods. This family apartment offers many design supplies while maintaining its traditional style.

The many high-quality furs and fabrics combine perfectly with the decoration and furniture to offer a real cocoon of warmth and security.

Two warm double rooms, then, make up the apartment as well as a three-bedroom for children, bringing the capacity to four adults and three children.

- Distance from the center: 1000 m
- Closest ski slope: PLANTRET
- Distance from the slopes: 50 m
- Distance to ski school: 1000 m
- Closest ski lift: PLANTRET
- Distance from ski lift: 250 m

Living-dining Room

Full Kitchen:

- Coffee machine
- Microwave
- Fridge
- Freezer
- Nespresso
- Kitchen exhaust hood
- Kettle
- Toaster
- Induction hob
- Dishwasher
- Washing machine
- Oven

Bedroom: Wardrobe, 1 Double bed (160 x 190)

Ensuite bathroom: Double sink, Shower, Hairdryer, Towel dryer, Toilet

Double or Twin bedroom: Office, Wardrobe 2 Single bed (possibility of a double bed) (90 x 190)

Children's bedroom: Wardrobe, 3 Bunk bed (two to sleep) (80 x 190)

Bathroom 1: Bathtub, Towel dryer, Single sink

Independent toilet: 1

INCLUDES

- Elevator
- Garage
- Ski locker
- Parking space









