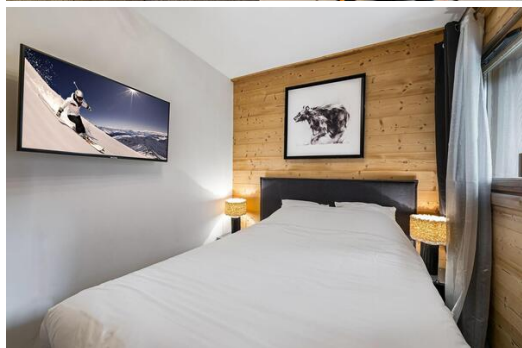


Small apartment for rental located in the new residence

France, Courchevel, Courchevel 1650

Apartment - REF: TGS-A2502



N° Bedrooms: 1

Ski Room

N° Bathrooms: 2

Distance to ski lift: 500m

N° People: 4

Distance to centre: central

Parking

M² built: 37 m²

Floor: 0

Wifi

TV

Activities in resort

Skiing/Snowboarding

Golf

Information Apartment in Courchevel 1650 Moriond

- N° of people: 4
- M² built: 37 m²
- 1 Bedrooms
- 2 Bathrooms
- Parking
- Floor 0
- Wifi
- Ski-room

Neighborhood: Entrance of the resort Courchevel 1650

Small apartment located in the new residence. It is located just 100 meters away from the snow front, and close to the shops and restaurants of Courchevel Moriond.

This 4-person apartment is suitable for small families. It has a bedroom with a double bed and a charming space with two bunk beds. They will make the happiness of the youngest.

This apartment will be the perfect fit for a sportful stay!

- Distance from the center: 100 m
- Closest ski slope: Front de Neige
- Distance from the slopes: 150 m
- Distance to ski school: 150 m
- Closest ski lift: Ariondaz
- Distance from ski lift: 150 m

LAYOUT

Open kitchen-living room

Bedroom: 1 Double bed

Corner area: 1 Bunk bed (two of sleep)

Bathroom 1: Double sink, Shower, Hairdryer

Independent toilet: 1

INCLUDES

- Elevator
- Ski locker
- Parking space
- Safe

SERVICES

Welcome

- Reception in agency
- Bathroom products

Housekeeping & Linens

- Slippers
- Linens (towels and sheets)
- Beds made before arrival
- End of stay cleaning
- Scheduled cleaning on request (additional fee)

EQUIPMENTS

Max height of garage 2m (be careful of no possibility of roof box)

Multimedia

- TV
- BOSE speakers

General equipments

- Elevator
- Ski locker
- Parking space
- Safe

Household appliance

- Microwave
- Fridge
- Fondue appliance
- Nespresso coffee machine
- Blender
- Kitchen exhaust hood
- Kettle
- Toaster
- Induction hobs

On request

- Baby cot

