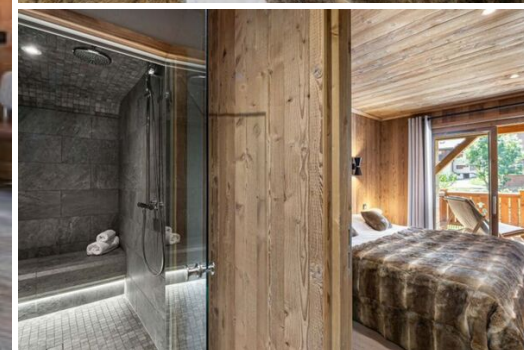
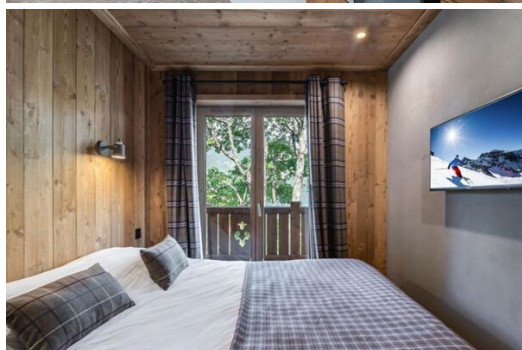


A duplex apartment for family or friends for rental

France, Courchevel, Courchevel 1300

Apartment - REF: TGS-A2519



N° Bedrooms: 4
Jacuzzi

N° Bathrooms: 4
Sauna

N° People: 6
Ski Room

Parking
Distance to ski lift: 500m

M² built: 124 m²
Distance to centre: central

Floor: 2

Wifi

Fireplace

Information Apartment in Courchevel 1300 Le Praz

- N° of people: 6
- N° of Childrens: 4
- M² built: 124 m²
- 4 Bedrooms
- 4 Bathrooms
- Hammam / Sauna
- Parking
- Floor 2
- Wifi
- Chimney
- Ski-room

The apartment located a few meters close the village of Courchevel Le Praz, is a duplex apartment for family or friends. Its location is ideal and is only a 5-minute walk from the Courchevel Le Praz ski lifts.

The architecture of this new residence is authentic and blends into the typical Savoyard setting of the village of Courchevel Le Praz. The exterior combines stone and wood. Large windows with access to the various balconies give the Residence a contemporary look. The unique interior decoration is a subtle combination of wooden furniture and warmly coloured fabrics.

You'll appreciate the beautiful volumes and equipment that this property offers. This family apartment hosts eight adults and two children in four bedrooms with their bathroom or shower room, a living room with a superb volume under the roofs with a dining area, a lounge area with fireplace and an open kitchen with the necessary equipment.

A South-facing sunny terrace for a calm moment after a day of skiing on the slopes of the largest ski area in the world, a hammam, a garage (plus a parking place) and a ski room complete the whole of this very beautiful apartment.

With family or friends, you'll be seduced by the apartment, a warm duplex apartment with a view of the mountains, near the centre of Courchevel Le Praz, a haven of sharing and conviviality not far from the slopes and the free shuttles leading to the different levels of the Courchevel resort. Its services will contribute to the success of your amazing holiday.

GROUND FLOOR

Leisure areas :

- Hammam

Bedroom :

Double or Twin bedroom :

- Balcony , Wardrobe, Wardrobe
- 1 Double bed (160 x 200)
- Ensuite bathroom : Shower, Towel dryer, Single sink

Double or Twin bedroom :

- Balcony , Wardrobe
- 1 Double bed (160 x 200)
- Ensuite bathroom : Double sink , Shower, Towel dryer

Master bedroom :

- Balcony , Office, Shelves, Chair, Wardrobe
- 1 Double bed (180 x 200)
- Ensuite bathroom : Bathtub, Towel dryer, Single sink, Toilet

Lobby

Independent toilet : 1

Living area :

Balcony

Bar

Fireplace

Fully fitted kitchen

Open kitchen:

- Coffee machine
- Microwave
- Fridge
- Raclette machine
- Vacuum
- Ironing board
- Nespresso
- Iron
- Kitchen exhaust hood
- Kettle
- Toaster
- Refrigerate wine cellar
- Induction hob
- Dishwasher
- Washing machine
- Dryer
- Oven

Lounge area

Dining area

TV lounge

Bedroom :

Children's bedroom :

- Wardrobe
- 2 Bunk bed (1 sleep) (80 x 190)
- 2 Single bed (80 x 190)
- Ensuite bathroom : Shower, Towel dryer, Single sink

Independent toilet : 1

Elevator

Garage

Wood fireplace

Ski locker

Parking space

Boots heater

- Distance from the center : 80 m
- Closest ski slope : Front de neige
- Distance from the slopes : 450 m
- Distance to ski school : 450 m
- Closest ski lift : Le Praz
- Distance from ski lift : 450 m





