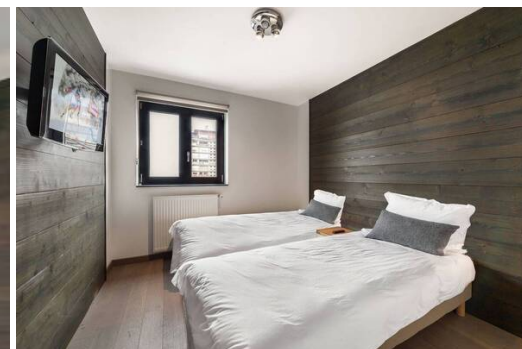


# Located on the sixth floor apartment in Courchevel 1650

France, Courchevel, Courchevel 1650

Apartment - REF: TGS-A2657



N° Bedrooms: 3

Wifi

N° Bathrooms: 3

ski-in/ski-out

N° People: 6

Dishwasher

N° Children's: 2

TV

N° parking's: 1

Washing machine

M² built: 86 m²

Ski Room

Exposure: Northeast

Distance to centre: central

Floor: 6

## Activities in resort

Skiing/Snowboarding

Golf

## Apartment in Courchevel 1650 Moriond for rental

Ski out / Ski in / Centre / Near Ski school

The apartment is located in the residence of the same name, is a contemporary apartment in the centre of Courchevel Moriond. Its central location and access to the ski slopes make it a functional apartment.

Located on the sixth floor of the residence, the apartment has been completely renovated in a contemporary style, as if to fit in with the spirit of the residence.

The interiors of the apartment are a mixture of up-to-date traditions: the wood is used in dark cladding, the stone gets a place on the walls taking a white hue and the bright colors melt into this modern decor.

The 2 twin rooms will accommodate 4 guests for soothing and relaxing moments after a day of skiing, while the double room will be ideal for a couple of 2 adults who will enjoy the calm. The balcony will allow you all to gather around a drink to celebrate the exploits of the day on the slopes!

The living room combines the white fitted kitchen, perfectly integrated in the stone wall, a dining area where you can gather around a comforting meal and a lounge area with television to enjoy the warmth of apartment during the long winter evenings.

The apartment is ideal for a family or a group of friends for a memorable holiday in Courchevel Moriond. The decoration and the privileged location of the apartment will make your winter sports holiday a success.

- Distance from the center : 0 m
- Closest ski slope : Moriond
- Distance from the slopes : 0 m
- Distance to ski school : 150 m
- Closest ski lift : Ariondaz
- Distance from ski lift : 150 m

## LAYOUT

- Living area :
  - Balcony
  - Open kitchen
  - Dining area
  - Living room
- Double bedroom :
  - Chest of drawers, Dressing , TV
  - 2 Single beds (90 x 200)
- Double bedroom :
  - Chest of drawers, Dressing
  - 2 Single beds (90 x 200)
  - Ensuite bathroom : Shower, Towel dryer, Single sink
- Master bedroom :
  - Chest of drawers, Dressing
  - 1 Double bed (160 x 200)
  - Ensuite bathroom : Shower, Towel dryer, Single sink, Toilet
- Bathroom :
  - Bathroom 1 : Shower, Towel dryer, Single sink, Toilet
- Other areas :
  - Laundry room
  - Garage

## SERVICES

Welcome

- Reception in agency
- Bathroom products

Housekeeping & Linens

- Slippers

- Linens (towels and sheets)
- Beds made before arrival
- Scheduled cleaning on request (additional fee)

## EQUIPMENTS

### Multimedia

- Wifi
- DVD player / Blu-ray
- Satellite TV

### General equipments

- Ski locker
- Parking space

### Household appliance

- Microwave
- Fridge
- Freezer
- Vacuum cleaner
- Nespresso coffee machine
- Blender
- Mixer
- Ceramic hobs
- Dishwasher
- Washing machine
- Oven

### On request

- Baby cot
- High chair





