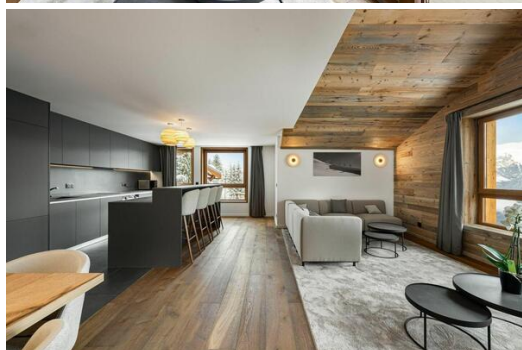
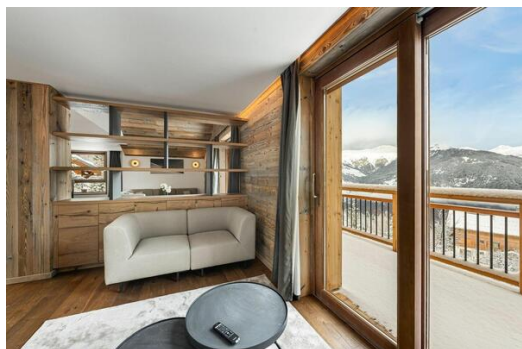


Apartment for rent in Courchevel 1550 Village

France, Courchevel, Courchevel 1550

Apartment - REF: TGS-A2774



N° Bedrooms: 3
Private lift

N° People: 5
Dishwasher

Parking
TV

M² built: 113 m²
Ski Room

Floor: 2
Distance to ski lift: 100m

Wifi
Distance to centre: central

Mountain view

Communal lift

Activities in resort

Skiing/Snowboarding

Cycling

Cross country skiing

Golf

Hiking

Mountain-Biking

Riding

2 bedrooms apartment for rent in Courchevel 1550 Village

The apartment is located in a brand new residence in the Gravelles district of Courchevel Village. Its location is ideal as it is just a few steps from the slopes of the largest ski area in the world.

The apartment has a contemporary spirit with neutral colours that bring finesse, such as the grey present on the furniture and the thick carpet in the living room. The all-black kitchen contrasts with the lighter colours and gives a real character to the apartment. This decoration combines perfectly with the strong presence of wood which brings warmth and reminds us that we are in a mountain construction.

Two bedrooms and a cabin make up the apartment, including a family bedroom ensuite and a double ensuite bedroom which brings the capacity to 6 adults. Wood is also present in the rooms, this time with brighter colours offering very cosy places.

This apartment is the ideal place for a family wishing to stay in a standing apartment, all with a privileged location.

To make your stay even more enjoyable, many à la carte services are available.

LAYOUT

- Living area :
 - Balcony
 - Fully fitted kitchen
 - Dining area
 - Living room
- Double or Twin bedroom :
 - Wardrobe, TV
 - 1 Double bed (140 x 200)
 - Ensuite bathroom : Shower, Towel dryer, Single sink
- Family bedroom :
 - Wardrobe
 - 1 Double bed separable
 - 1 Single bed (90 x 200)
 - Ensuite bathroom : Bathtub, Double sink , Towel dryer, Toilet
- Other areas :
 - Boots heater
 - Garage
 - Ski room
- Independent toilet : 1

SERVICES

Welcome

- Reception at the property
- Champagne
- Flowers
- Welcome basket
- Bathroom products

Housekeeping & Linens

- Slippers
- Linens (towels and sheets)
- Beds made before arrival
- End of stay cleaning
- Scheduled cleaning on request (additional fee)

EQUIPMENTS

Multimedia

- TV

General equipments

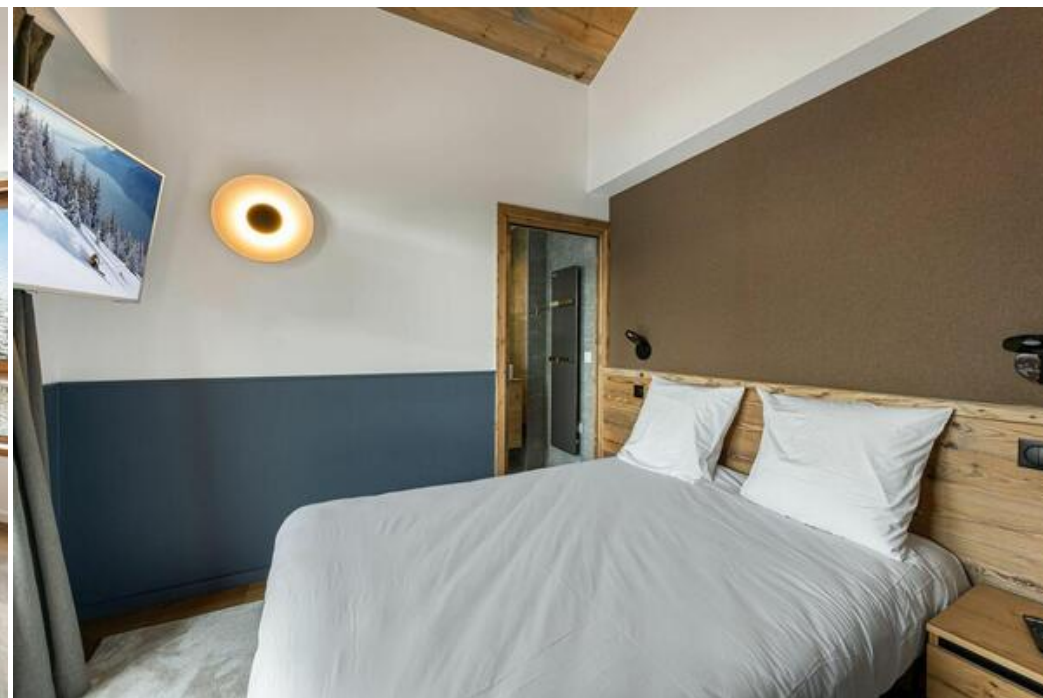
- Elevator
- Garage
- Ski locker
- Outdoor furniture

Household appliance

- Dishwasher

On request

- Baby cot
- High chair







APPARTEMENT N° 524
TYPE : T3

TABLEAU DES SURFACES	
Pièces	Surface habitable
Entrée	5,50 m ²
Piece de Vie	40,00 m ²
Chambre (1)	15,21 m ²
Chambre (2)	9,50 m ²
Chambre enfant	5,50 m ²
Salle de Bain (1)	5,50 m ²
Salle de Bain (2)	3,30 m ²
WC	1,67 m ²
Equipevent	5,70 m ²
TOTAL HABITABLE : 113,66 m ²	
Sous-sol (Garage)	
Superficie sous-sol (Garage) : 100,00 m ²	
Surfaces Balcons	25,00 m ²



Titulaire Aménagement intérieur Résidence Hôtelière "Les Ancolles" Commune de Saint Bon Tarentaise		Maître d'ouvrage SAS - Agence d'Alberville Les Ancolles - 21 Avenue des Chateaux-Alpes 73000 Albertville		Architecte Archer Giffon 8 Rue Loubert de la Cour - 69402 Saint Cyr de Meris (CD)	
Projet KA.	MAQUETTE APPARTEMENT 524 - R+2	Version A3	Date 26.11.21	Architecte Archer Giffon	Site web www.giffon.com

Les plans sont établis sur la base des données techniques et des plans de l'architecte.
Les surfaces sont données à titre indicatif et ne constituent pas une garantie.
Les surfaces sont données à titre indicatif et ne constituent pas une garantie.