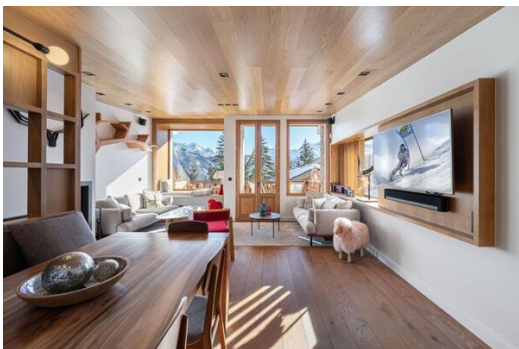


Apartment for rent in Chenus, Courchevel 1850 with 111 sqm

France, Courchevel, Courchevel 1850, Chenus

Apartment - REF: TGS-A2866



N° Bedrooms: 4

Dishwasher

N° Bathrooms: 4

TV

N° People: 8

Washing machine

Parking

Ski Room

M² built: 111 m²

Distance to ski lift: 100m

Wifi

Distance to centre: central

Fireplace

Mountain view

Activities in resort

Skiing/Snowboarding

Cycling

Cross country skiing

Golf

Hiking

Mountain-Biking

Riding

Apartment for rent in Chenus, Courchevel 1850 with 111 sqm and 4 bedrooms

Distance from the center : 300 m

Distance from ski lift : 500 m

Closest ski slope : Dou du Midi

Distance from the slopes : 50 m

Distance to ski school : 500 m

Closest ski lift : Télésiège du Plantret

You will be seduced by this charming triplex ideally located in the quiet Chenus district, in the residence composed of only 3 similar apartments.

Renovated and decorated by a renowned architect, you will enjoy convivial moments by the fireplace with a magnificent view of the surrounding mountains and chalets.

With its four bedrooms with en suite shower rooms and warm living spaces, the apartment will delight its eight occupants for a memorable stay.

Nestled in the pine trees, next to the emblematic Hotel La Sivolière, you will be charmed by this comfortable apartment only a few meters from the slopes of the largest ski area in the world.

SERVICES

Welcome

- Bathroom products
- Reception in agency
- Wood for the fireplace

Housekeeping & Linens

- Beds made before arrival
- End of stay cleaning (except the kitchen)
- Linens (towels and sheets)
- Scheduled cleaning during the stay
- Slippers

EQUIPMENT

General

- Parking space
- Ski locker
- Without elevator
- Wood fireplace

Multimedia

- SONOS speaker
- Satellite TV

Household appliances

Dishwasher

Dryer

Fondue appliance

Freezer

Fridge

Induction hobs

Not included (on request)

Baby cot

High chair





