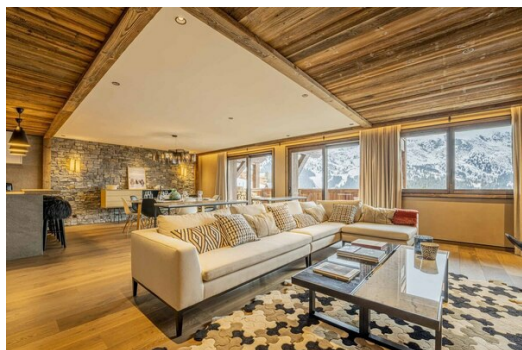


Village de l'Orée, an upscale, ski-in ski-out

France, Méribel

Apartment - REF: TGS-A3372



N° Bedrooms: 5
Wifi
Ski Room

N° Bathrooms: 5
ski-in/ski-out
Distance to centre: central

N° People: 10
Fireplace

N° parking's: 3
Mountain view

M² built: 211 m²
Communal lift

Exposure: West
Dishwasher

Floor: 2
TV

N° Floors: 2
Washing machine

Activities in resort

Skiing/Snowboarding

Cross country skiing

Golf

Hiking

Mountain-Biking

Riding

Spacious duplex flat, ideally located at the Rond-Point des Pistes, this new flat called with a surface area of 211 m² offers exceptional facilities.

Located on the 2nd floor of the new residence, you will enjoy a breathtaking view of the Méribel valley with a full western exposure.

You will be only a few steps away from the slopes, the ski lifts and the ESF meeting point.

The flat has 5 bedrooms and can accommodate up to 10 people.

The advantages of this property :

- Stunning views of the summits
- Wifi
- 3 private covered parkings in the residence
- Ski locker with boot dryer

Property layout

Spacious duplex apartment, ideally located at the Rond-Point des Pistes, this new apartment called "Little Himalaya" with an area of 211 m² offers exceptional services. The apartment has 5 bedrooms and can accommodate up to 10 people.

Entrance by 2nd floor

- Entrance hall
- Guest toilet
- Kitchen open to the living room
- Living room with television
- Large west facing balcony

1st floor

- Bedroom 1: 2 single beds, shower room
- Bedroom 2: Master bedroom with double bed 200x200, bathroom with double washbasin, bath, shower and toilet
- Study
- Laundry room
- Guest toilet
- Bedroom 3: double bed and shower room
- Bedroom 4: double bed and bathroom
- Bedroom 5: double bed and bathroom

The most of this accommodation:

- Access to ski slopes and ESF at 65m
- Meribus shuttle stop at 60m
- 3 private parking spaces
- WIFI

Services included :

- Personalized welcome
- Welcome products
- Beds made on arrival
- Linen provided
- Regular cleaning of the apartment
- Concierge service

An upscale, ski-in ski-out residence built in 2020.

It is located in the heart of the Rond-Point des Pistes district, an exclusive and strategic location: the best sunshine in the valley, pedestrian access to shops, restaurants and free shuttles to the resort center. A true convergence point of many slopes, you are also a few steps away from the ESF meeting point and the "Piou-Piou" kindergarten.



