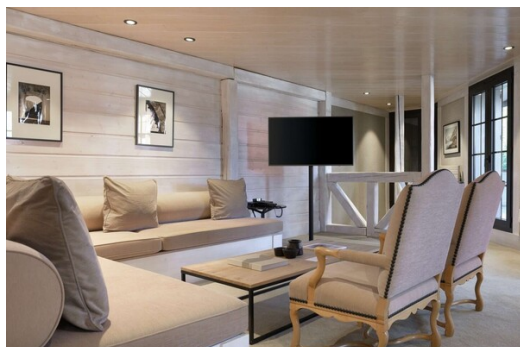


Beautiful 90m2 duplex flat in Courchevel 1850

France, Courchevel, Courchevel 1850

Apartment - REF: TGS-A3528



N° Bedrooms: 2
Mountain view

N° Bathrooms: 2
Dishwasher

N° People: 4
TV

Parking
Distance to ski lift: 100m

M² built: 90 m²
Distance to centre: central

Terrace

Wifi

ski-in/ski-out

Activities in resort

Skiing/Snowboarding

Cycling

Cross country skiing

Golf

Hiking

Mountain-Biking

Riding

Beautiful luxury flat, close to the centre, offering a large living room and a lovely terrace with views of the slopes.
90m2 - Duplex - sleeps 4 - Courchevel 1850 - at the foot of the slopes

It comprises :

Level 1

- Entrance hall
- Living room with desk and TV opening onto a large terrace with garden furniture
- Dining room opening onto the lounge
- Fully-equipped kitchen opening onto the dining room (ceramic hob, oven, dishwasher, etc.).

Level -1

- Second entrance with storage space and safe
- Large dressing room
- Shower room with toilet

- A reading area
- A double bedroom with a 200 x 200 bed dressing room, en-suite bathroom and separate toilet.
- A double bedroom with bed 140x190

Other facilities

Bose speaker

Wifi on 1st floor only (lounge, dining room and kitchen)

Possibility of booking treatments at the adjoining hotel spa.

In your winter rental: linen (sheets and towels), beds made on arrival, welcome pack and end-of-stay cleaning.

Optional services may be available on request (extra cleaning, mid-stay linen change, chef, etc.).

In your summer rental: End-of-stay cleaning.

Optional services may be available on quotation: linen (sheets and towels), beds made on arrival, mid-stay cleaning.

The keys are handed over directly at the agency.

A deposit and a compulsory security deposit will be requested before your arrival.



