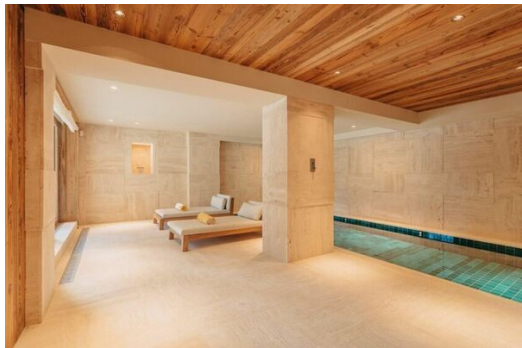
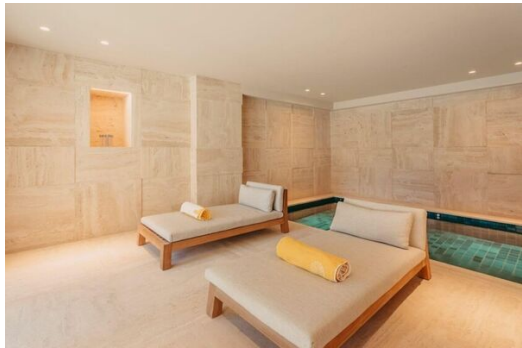


Chalet for rent in Bellecôte, Courchevel 1850 with 530 sqm

France, Courchevel, Courchevel 1850, Bellecôte

chalet - REF: TGS-A2867



N° Bedrooms: 6	N° Bathrooms: 7	N° People: 14	Parking	M² built: 573 m²	Exposure: South	Wifi	ski-in/ski-out
Indoor pool	Jacuzzi	Sauna	Communal SPA	Private SPA	Dishwasher	TV	Washing machine
Ski Room							
Activities in resort							
Skiing/Snowboarding	Cycling	Cross country skiing	Mountain-Biking	Riding	Tennis		

Chalet for rent in Bellecôte, Courchevel 1850 with 530 sqm and 7 bedrooms

Natural and design feel for an exclusive chalet

Everything in this chalet, which can accommodate 14 people, works in harmony. First of all, the light and the surrounding mountains, which enter largely through the bay windows. But also the luxury of the materials and the simplicity of the forms. Larch wood panelling and furniture with organic shapes sit alongside a few design pieces, such as these seats signed by Pierre Jeanneret or this large-format photo by David LaChapelle.

Set on five levels, it offers 6 en-suite bedrooms that can accommodate up to 14 guests. The living area, with its high ceilings, is warmed by a contemporary central fireplace. It opens onto a huge south-facing terrace with views of the Courchevel slopes and the Alpine peaks. As a bonus, the mezzanine, with its balcony overlooking the living room, offers an isolated and comfortable work space, perfect for the professional needs of guests.

Mountain pleasures at your fingertips

In the popular hamlet of Bellecôte, on the edge of the Cospillot piste, the chalet has ski-in/ski-out access. Ideal for your days on the slopes. The chalet also has a large wellness area with an indoor swimming

pool, hammam, massage and sports room. A space that you will enjoy after skiing, but which will also be much appreciated by non-skiers.

Your stay at the Chalet includes top of the range facilities. A chef and butler will prepare and serve your meals full board style. A housekeeper and driver will also accompany you throughout your stay.

GASTRONOMY

- Butler
- 10h/day

Meal service

- Chef
- 10h/day

Meal service : Breakfast, lunch or dinner and tea-time

TRANSPORTATION

- Chauffeur
- 12h/day

Chauffeur services

MANAGEMENT AND MAINTENANCE

- Housekeepers
- 10h/day

Daily maintenance and cleaning

- Chalet Manager

Chalet management, stay organisation and conciergerie

INCLUDED SERVICES

Welcome

- Bathroom products
- Champagne
- Flowers
- Reception at the property
- Welcome basket
- Wood for the fireplace

Housekeeping & Linens

- Beds made before arrival
- End of stay cleaning
- Linens (towels and sheets)
- Scheduled cleaning during the stay
- Slippers
- Towels' and linen's change(s) (sheets and towels) during the stay

EQUIPMENT

General

- Elevator
- Garage
- Outdoor furniture
- Safe
- Wood fireplace

Multimedia

- Apple TV

Speakers and wireless audio system

- Wifi

Not included (on request)

- Baby cot
- High chair













