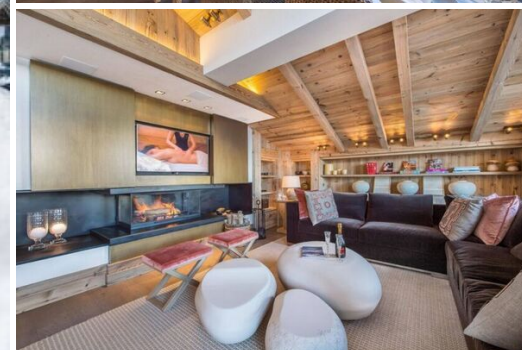


# Chalet for rent in Plantret, Courchevel with 890 sqm

France, Courchevel, Courchevel 1850, Plantret

chalet - REF: TGS-A2869



N° Bedrooms: 6

Jacuzzi

N° Bathrooms: 7

Sauna

M² built: 890 m²

Communal SPA

Wifi

Private SPA

ski-in/ski-out

Dishwasher

Indoor pool

TV

Heated Pool

Washing machine

Fireplace

Ski Room

## Activities in resort

Skiing/Snowboarding

Cycling

Cross country skiing

Golf

Hiking

Mountain-Biking

Riding

## Chalet for rent in Plantret, Courchevel with 890 sqm and 6 bedrooms

It is ideally located in the popular district of Chenus a few meters from the center and directly on the slope of Plantret. The chalet offers a decor that is both contemporary and warm with a subtle blend of design and tasteful use of quality materials such as metal, marble, fur, old wood furniture, lamps and other decorative elements made-to-measure for the chalet. There are exceptional metal branches that span the entire height of the chalet and meet in the middle amongst porcelain birds which gives the chalet a heart and pulse.

*The is a ski in/ ski out chalet located on the Plantret slope, in the very privileged Chenus area, is part of Hameau de la Volière, a set of three luxury chalets just minutes from the center of Courchevel 1850. The stunning chalet creates the event in Courchevel and it is undoubtedly one of the most beautiful chalets built in recent years.*

This **ultimate luxury chalet** offers a decor that is both contemporary and warm with a subtle blend of sleek lines, luxurious amenities and noble materials such as metal, marble, fur, stone and old wood are present throughout this exclusive chalet.

The large sofas in the lounge encircle the huge glass fireplace while the television is hiding behind a sliding gilded pine panel that when closed, forms a monochrome picture.

Numerous furniture, lamps and other decorative elements were designed by the interior designer Christophe Tollemer and bespoke for this ultimate luxury chalet like the huge table in the dining room or the

exceptional metal wrought iron branches that span the entire height of the chalet and welcome porcelain birds into the aviary.

The level of equipments and services of the chalet is worthy of the most prestigious hotels. This ultimate luxury chalet is equipped with a private ski room from which you have direct access to the ski slopes and a **sublime wellness area** with pool, spa and gym.

The chalet also offers **high end services** provided by the reputed Cimalpes: chef, butler, driver, ski instructor, trainer and many other services that will make your holidays more enjoyable.

The chalet seduce a demanding clientele accustomed to the best services and real estate. Its architecture, its many high-end amenities and level of service make the ultimate luxury chalet an **iconic** luxury chalet in Courchevel 1850 that seduces every year more and more famous celebrities from around the world.

## GASTRONOMY

Butler

10h/day

Meal service

Chef

10h/day

Meal service : Breakfast, lunch or dinner and tea-time

## TRANSPORTATION

Chauffeur

12h/day

Chauffeur services

## MANAGEMENT AND MAINTENANCE

Housekeepers

10h/day

Daily maintenance and cleaning

## INCLUDED SERVICES

Welcome

Bathroom products

Champagne

Flowers

Reception at the property

Welcome basket

Wood for the fireplace

Housekeeping & Linens

Beds made before arrival

End of stay cleaning

Linens (towels and sheets)

Scheduled cleaning during the stay

Slippers

Towels' and linen's change(s) (sheets and towels) during the stay

## EQUIPMENT

### General

Baby bath

Baby cot

Boots heater

Elevator

Garage

High chair

### Multimedia

Apple TV

Computer

DVD player / Blu-ray

Printer

Russian channels

Wifi

### Household appliances

Device with grill-stone

Dishwasher

Dryer

Fondue appliance

Freezer

Fridge

## INCLUDED

Chef and waiter service for breakfast and a choice of dinner or lunch (see timetable on contract)

Valet parking available in Courchevel (from 9am to 9pm or from 8am to 8pm)

Household staff for daily cleaning and blanket service

Linen, towels and slippers provided

CLARINS skin care products in all bathrooms

Hair dryer in all bathrooms

Safe in all rooms

Humidifier

Maintenance of the chalet and swimming pool

Computer, fax, printer, Wifi (also available at the Cimalpes agency from 9am to 9pm or from 8am to 8pm)

DVD library available on request

Board games available on request

Airport transfer Lyon Geneva

Paragliding flight

#### NOT INCLUDED

Food for the preparation of breakfasts, lunches and dinners. Invoiced at purchase price

Alcoholic beverages à la carte

For a full board service, the daily rate for the services of the chef and the waiter will be invoiced at 450€ each

Tourist tax per person per day not included

#### LAYOUT

##### FLOOR 0

Entrance

Living room with fireplace

Eating room for 12 people

Fitted kitchen

Outdoor terrace with garden furnitures

##### FLOOR -1

Master bedroom with office, bathroom with shower and bathtub , TV, dressing, and terrace

##### FLOOR -2

Set of bedrooms

Access to a big terrace with an outdoor hot tub

##### FLOOR -3

Parking connected with a car lift

Wine cellar

Laundry room and linen room

Ski room

Direct access to the slope

## FLOOR -4

Spa with large swimming pool, lounge and bar

Jacuzzi

Lockers



















