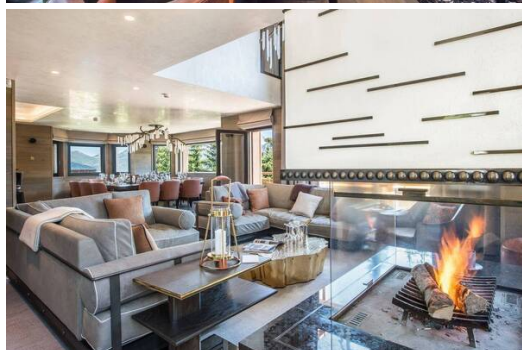
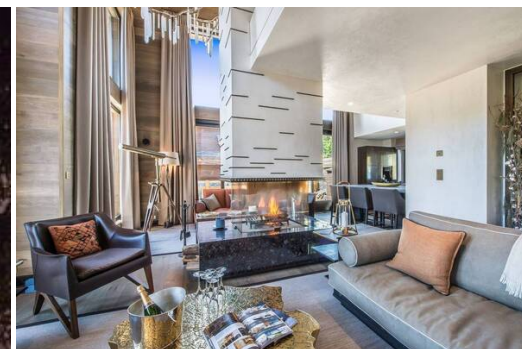


Luxury chalet for rent in Courchevel 1850 with 687 sqm

France, Courchevel, Courchevel 1850, Nogentil

chalet - REF: TGS-A2927



N° Bedrooms: 8
Jacuzzi

N° Bathrooms: 9
Sauna

N° People: 15
Private lift

Parking
BBQ

M² built: 687 m²
Dishwasher

Wifi
TV

Heated Pool
Washing machine

Fireplace
Ski Room

Activities in resort

Skiing/Snowboarding

Cycling

Cross country skiing

Golf

Hiking

Mountain-Biking

Riding

Luxury chalet for rent in Courchevel 1850 with 687 sqm and 8 bedrooms

Snow, wood, a fireplace, large spaces, are the ideals synonymous with charm and conviviality that make us dream when we imagine a mountain chalet.

Combining luxury and elegance, it is the cosy atmosphere that the architect Gaston Regairaz has managed to in this magnificent chalet in Courchevel 1850.

Chalet, located 1300 m from the centre of the resort, in the Nogentil district with a direct exit on the Cospillot piste and 100m from the Pralong piste, is a luxury ski to ski chalet built with the greatest respect for alpine traditions.

The 685 sq. m chalet, with a contemporary and imposing architecture, can accommodate 14 people, has 6 bedrooms including 1 "Master" and 7 bathrooms on 4 levels served by an elevator. The lounge and the Master pass just above the fir trees offering a clear view with the magical impression of being in the middle of the forest, like a natural lookout.

The large opening distributed on a part of the roof facing the living room is highlighted in order to better exploit the light. The interior decoration in natural colours favours elegance in order to keep an impression of space and optimal brightness.

This chalet, with its modern lines and the characteristics of the place, in order to obtain a typically mountain atmosphere, is none other than the combination of several noble materials. No shutters but heavy

blackout wool curtains, with delicate chevron. Wool blankets felted the different rooms and enriched the decor with other textures.

The whole day area is thought of as an open space. Thus, the living room, kitchen and mezzanine blend together and interact in a seamless path, punctuated only by the alternation of materials: wood, iron, tiles, glass, natural and artificial light.

Wood, on the other hand, shapes the passage from horizontal to vertical surfaces, sometimes covering boards to enhance windows and walls, sometimes as an element of furniture. The glass railing does not obstruct the suggestive view from top to bottom, which includes the fine and majestic lines of the crystal chandelier hanging like tree branches to illuminate the living room.

The same essence has been used in the kitchen where the marble countertop, with its light grey tonality, blends perfectly with the warmth of the wood. Great attention has been paid to textiles, velvets and furnishing accessories that reinforce the welcoming character and minimal elegance of the premises.

Among its strong features, the chalet, in addition to its decoration worthy of a refined jewel, enjoys its panoramic view of the mountains and offers a relaxing in the imposing overflow pool, jacuzzi, hammam and outdoor jacuzzi.

In order to fully relax, a chef and a waiter are at your disposal, and this in the greatest discretion, for breakfast and dinner. They will prepare delicacies and other specialties for you in the fully equipped professional dining kitchen with a food elevator dish that runs through all the floors of the chalet.

Its architecture, its level of equipment and the services offered make it an emblematic prestigious chalet in Courchevel 1850.

A selection of out of the ordinary chalets with signature architecture, where decorative arts and masterpieces stands alongside the most noble materials. An extraordinary universe with unusual touches.

GASTRONOMY

Butler

10h/day

Meal service

Chef

10h/day

Meal service : Breakfast, lunch or dinner and tea-time

TRANSPORTATION

Chauffeur

12h/day

Chauffeur services

MANAGEMENT AND MAINTENANCE

Housekeepers

10h/day

Daily maintenance and cleaning

INCLUDED SERVICES

Welcome

Bathroom products

Champagne

Flowers

Reception at the property

Welcome basket

Wood for the fireplace

Housekeeping & Linens

Beds made before arrival

End of stay cleaning

Linens (towels and sheets)

Scheduled cleaning during the stay

Slippers

Towels' and linen's change(s) (sheets and towels) during the stay

EQUIPMENT

General

Boots heater

Elevator

Ethanol fireplace

Parking space

Safe

Wood fireplace

Multimedia

Apple TV

Arabic channels

DVD player / Blu-ray

Home cinema

Russian channels

Satellite TV

Household appliances

Nespresso coffee machine

Not included (on request)

Baby cot

High chair











© MARCBERENQUER.COM



© MARCBERENQUER.COM



© MARCBERENQUER.COM



© MARCBERENQUER.COM





