

# Chalet in Meribel for rent de Morel

France, Méribel

chalet - REF: TGS-A3198



N° Bedrooms: 5  
Communal lift

N° Bathrooms: 5  
Dishwasher

N° People: 10  
TV

N° parking's: 2  
Washing machine

M² built: 240 m²  
Ski Room

Wifi  
Distance to ski lift: 100m

Fireplace  
Distance to centre: central

Mountain view

## Activities in resort

Skiing/Snowboarding

Cycling

Cross country skiing

Golf

Hiking

Mountain-Biking

Riding

This pretty mountain chalet in the hamlet of Morel combines modernity and authenticity. The materials chosen are in keeping with Savoyard know-how, with stone slates, old three-ply wood and gouged wood parquet flooring.

Its contemporary furnishings, made up of furniture by well-known designers, emphasise the spaces and reflect the desire to connect the main rooms to views and light.

Benefits of this property:

- unoverlooked location in the heart of nature
- Large living room with 5-metre windows opening onto a terrace and balcony
- modern furniture
- fireplace

This sublime mountain chalet is located in the small hamlet of Morel. It is surrounded by trees and has an uninterrupted view of the mountains. Its charm lies in the light-filled living room, with its many windows and high ceilings. With an impressive surface area, this room is illuminated by its 5-metre-high windows, and comprises a lounge area, dining area, open-plan kitchen and utility room.

It opens onto a west-facing terrace and balcony. The entrance is via a small chalet overlooking the property. Access to the chalet is via a stairwell that leads to the living areas.

Decorated by Anne-Sophie and Jean-Marc Mouchet, this chalet combines Savoyard savoir-faire with its lauze stone roofs, triple-ply wood, wool textures and spectacular gouged wood flooring.

The property comprises:

Ground floor:

- A small chalet comprising an entrance hall with cupboards
- 2 outdoor parking spaces
- Electric vehicle charging point

Level - 1

- Bedroom 1 - Master bedroom with high ceilings, en-suite bathroom with shower and WC

Level 2

- Large living room with high ceilings comprising;
- Open-plan kitchen
- Dining room
- Central fireplace
- Utility area/ cupboards
- Storage room
- Terrace and balcony overlooking the mountain, not overlooked.

Level - 3

- TV room
- Hamman + separate WC
- 1 separate WC
- Bedroom 2 - double bed (180x200) with en-suite bathroom with bath
- Bedroom 3 - double bed (180x200) with en-suite bathroom with shower

The bedrooms open onto a balcony

Level 4

Bedroom 4 - two single beds with en-suite bathroom with bath

Bedroom 5 - double bed (180x200) with en-suite bathroom with bath/shower and WC

- Separate WC

Services included:

- Personal welcome
- Welcome products
- Beds made up on arrival
- Linen provided
- Regular cleaning of flat
- Concierge service

Stay in this flat as if you were in a hotel, thanks to our 5\* Mountain Majord'Home concierge service.

A truly tailor-made service with endless possibilities.

Our teams are at your disposal to organise your stay and offer you a full range of services to make your holiday easier.

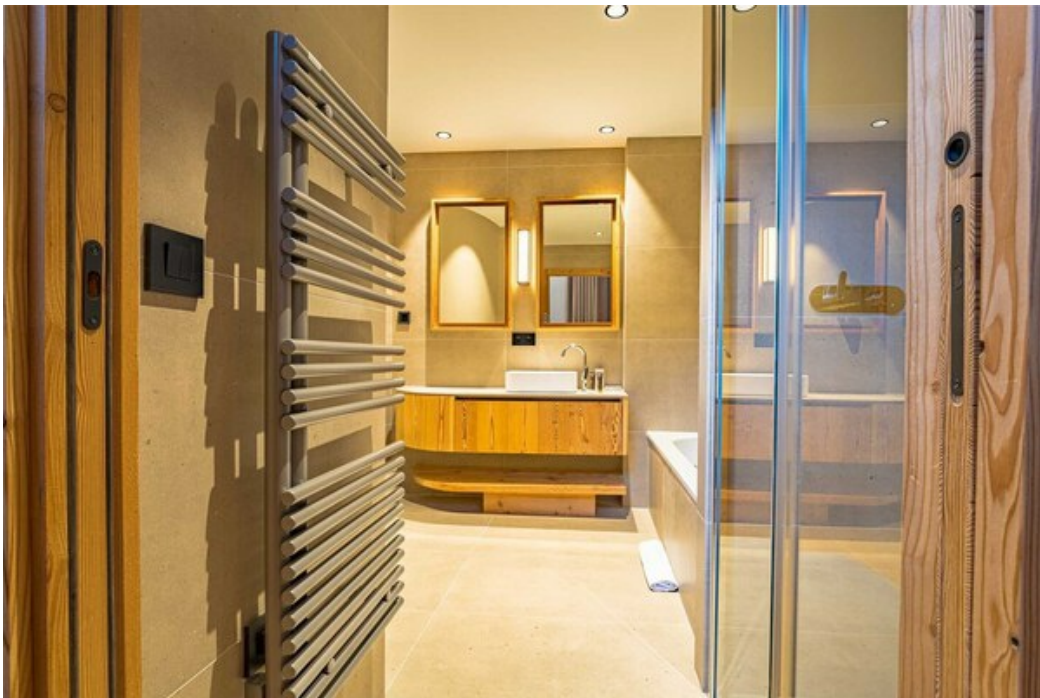
Pets are not allowed and this accommodation is non-smoking.

Tourist tax in addition at the current rate (for anyone over 18)

Amount of security deposit not collected: €8000







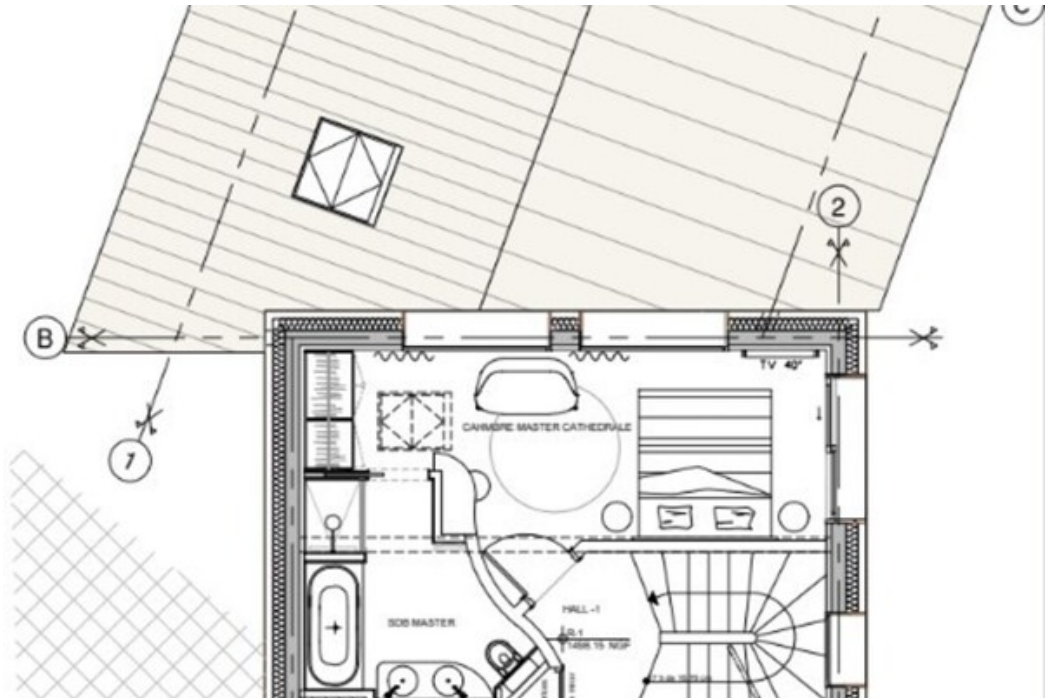
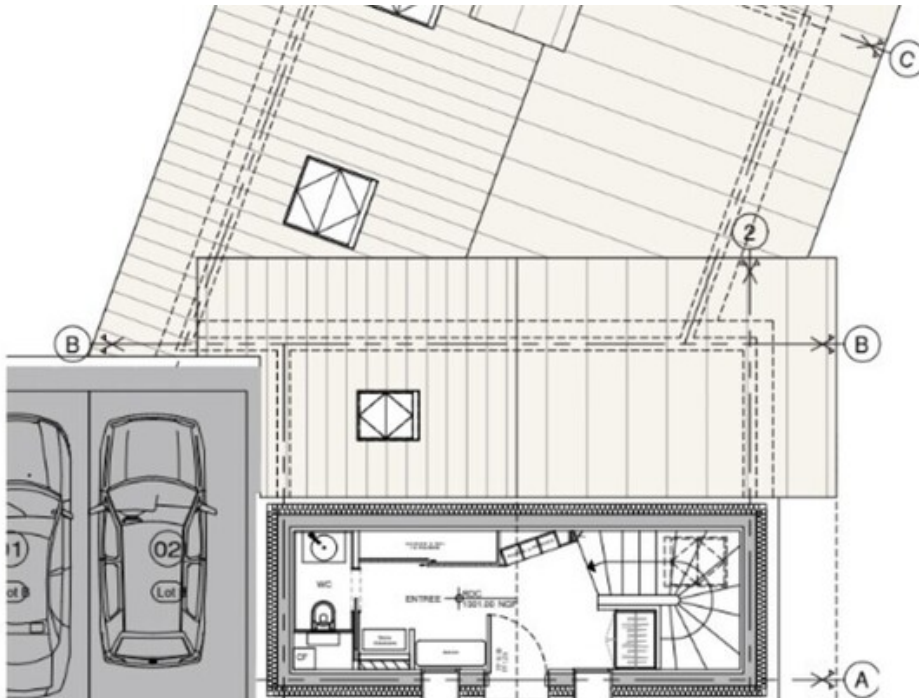
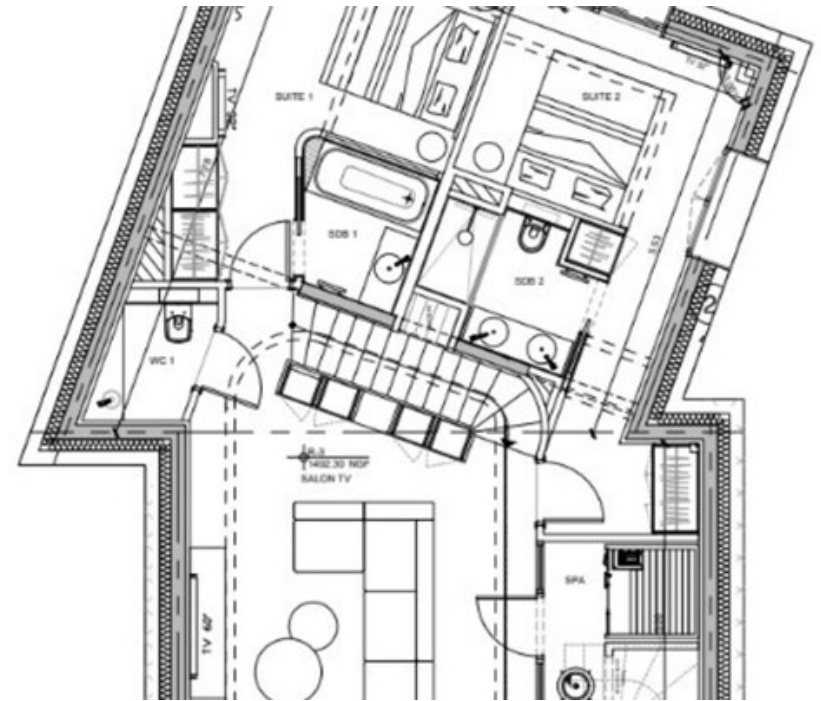
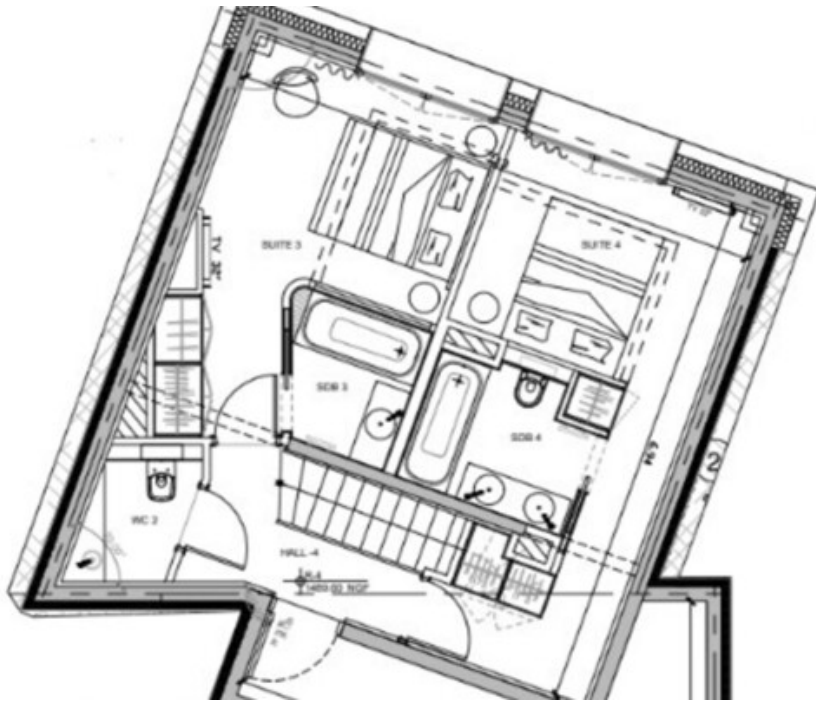












|                 |       |                |  |                |
|-----------------|-------|----------------|--|----------------|
| CHAMBRE 1       | 14.15 | m <sup>2</sup> |  | m <sup>2</sup> |
| CHAMBRE 2       | 15.23 | m <sup>2</sup> |  | m <sup>2</sup> |
| CHAMBRE 3       | 14.15 | m <sup>2</sup> |  | m <sup>2</sup> |
| CHAMBRE 4       | 15.77 | m <sup>2</sup> |  | m <sup>2</sup> |
| SDB MASTER      | 7.12  | m <sup>2</sup> |  | m <sup>2</sup> |
| SDB 1           | 3.34  | m <sup>2</sup> |  | m <sup>2</sup> |
| SDB 2           | 3.88  | m <sup>2</sup> |  | m <sup>2</sup> |
| SDB 3           | 3.34  | m <sup>2</sup> |  | m <sup>2</sup> |
| SDB 4           | 4.26  | m <sup>2</sup> |  | m <sup>2</sup> |
| WC              | 1.47  | m <sup>2</sup> |  | m <sup>2</sup> |
| WC 1            | 2.24  | m <sup>2</sup> |  | m <sup>2</sup> |
| WC 2            | 2.24  | m <sup>2</sup> |  | m <sup>2</sup> |
| SPA             | 4.04  | m <sup>2</sup> |  | m <sup>2</sup> |
| CAVE            | 9.80  | m <sup>2</sup> |  | m <sup>2</sup> |
| LOCAL TECHNIQUE | 5.43  | m <sup>2</sup> |  | m <sup>2</sup> |

