

# Chalet for rent in Meribel

France, Méribel

chalet - REF: TGS-A3215



N° Bedrooms: 6  
TV

N° Bathrooms: 6  
Washing machine

N° People: 15  
Ski Room

Wifi  
Distance to ski lift: 500m

Fireplace  
Distance to centre: central

Sauna

Mountain view

Dishwasher

## Activities in resort

Skiing/Snowboarding

Cycling

Cross country skiing

Golf

Hiking

Mountain-Biking

Riding

Sailing

Chalet is a charming, traditional savoyard style chalet comfortably accommodating up to 15 guests in 6 en-suite bedrooms. It has recently been awarded the "Label Meribel". Decorated in traditional alpine style this spacious chalet provides versatile accommodation to cater for all types of groups, from families and friends to corporate groups. While being very spacious it also has a warm and cosy feel. Benefiting from a spacious open plan living and dining area with mezzanine you can relax and unwind at the end of a hard day on the mountain on comfy sofas in front of the roaring open log fire.

Each of the 6 spacious bedrooms are well equipped and well furnished, all are en-suite and have both bath and shower facilities. Most bedrooms have their own private balconies too.

On the terrace you will find the hot-tub to ease away the aches and pains at the end of your day, on the ground floor there is a sauna & wetroom, the chalet also has a large boot room with boot dryers ensuring you have warm dry boots each morning.

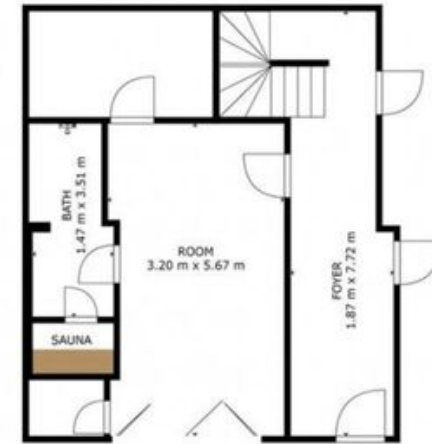
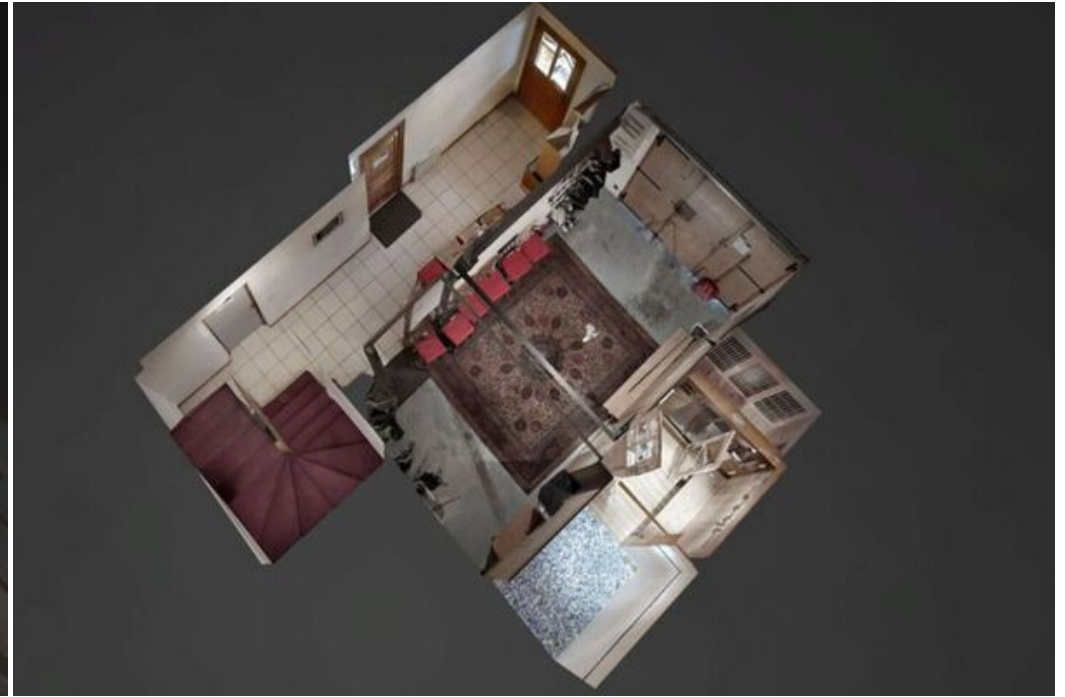
So, if you are looking for a spacious comfortable chalet where your every need will be looked after that is within easy reach of Meribel Centre and all it has to offer then make Chalet your very own home-from-home this winter!











FLOOR 1

GRAND ENTRANCE AREA  
 ROOM 1: 3.20 m x 5.67 m  
 ROOM 2: 1.87 m x 7.72 m  
 BATH 1: 1.47 m x 3.51 m  
 SAUNA: 1.47 m x 3.51 m  
 TOTAL: 32.2 m<sup>2</sup>



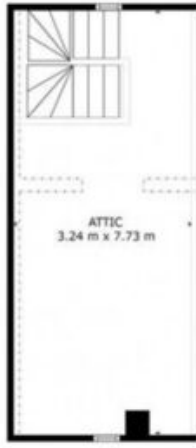
CHIFFRE ESTIMATIF, ARRÊTÉ  
 PLANCHER 1 - 14.10, PLANCHER 2 - 17.04  
 MUR/CLAPOTIS/BOISERIE - 01/01/2014  
 MÉTRICAGE - 01/01/2014  
 RÉFÉRENCES - 01/01/2014  
 N°PAIEMENT 2024

PLANCHER 1



CHIFFRE ESTIMATIF, ARRÊTÉ  
 PLANCHER 1 - 14.10, PLANCHER 2 - 17.04  
 MUR/CLAPOTIS/BOISERIE - 01/01/2014  
 MÉTRICAGE - 01/01/2014  
 RÉFÉRENCES - 01/01/2014  
 N°PAIEMENT 2024

PLANCHER 2



CHIFFRE ESTIMATIF, ARRÊTÉ  
 PLANCHER 1 - 14.10, PLANCHER 2 - 17.04  
 MUR/CLAPOTIS/BOISERIE - 01/01/2014  
 MÉTRICAGE - 01/01/2014  
 RÉFÉRENCES - 01/01/2014  
 N°PAIEMENT 2024

PLANCHER 3

