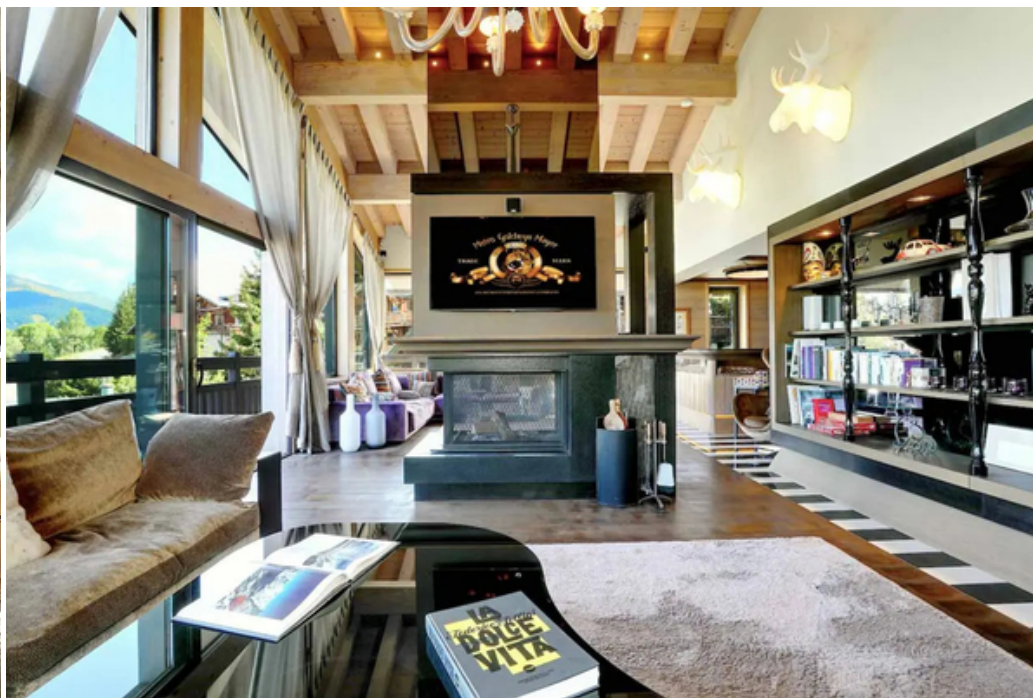


# Chalet has an ideal location the central Courchevel 1650

France, Courchevel, Courchevel 1850

chalet - REF: TGS-A3454



N° Bedrooms: 8

N° Bathrooms: 5

N° People: 14

Parking

M² built: 700 m²

Wifi

ski-in/ski-out

Private pool

Heated Pool

Fireplace

Jacuzzi

Sauna

Mountain view

Private lift

Air conditioning

Dishwasher

TV

Washing machine

Ski Room

Cinema/tv room

Distance to centre: central

## Activities in resort

Skiing/Snowboarding

Cycling

Cross country skiing

Golf

Hiking

Mountain-Biking

Riding

## Striking chalet with opulent facilities including a sumptuous spa.

Chalet has an ideal location close to the central hub of Courchevel 1650 and within walking distance of the ski lifts. Set over five floors, it is without doubt one of the finest chalets available to rent in Courchevel 1650. Teaming an elegant interior with state-of-the-art facilities, you will want for nothing during a stay in this magnificent chalet.

With exquisite views, luxurious furnishings and state-of-the-art facilities, Chalet wouldn't look out of place higher up the mountain in Courchevel 1850.

Bedrooms: 7 + 1 Capacity: 14 Size: 600 m<sup>2</sup> / 6458.4 ft<sup>2</sup>

You can enter the chalet on either the ground floor or first floor. A lift delivers you to the stunning double living room on the second floor, with two sumptuous seating areas separated by a central fireplace. After a day's skiing, relax in front of the satellite TV or enjoy an aperitif at the bar. Meals can be prepared in the semi-professional kitchen and enjoyed around the circular dining table which seats 14 people in comfort.

Panoramic views can be enjoyed through the vast picture windows or from the balcony.

Chalet is able to accommodate up to 14 guests in true style and comfort. There are seven suites to choose from, including an impressive master suite on the top floor which features a king-size bed, dressing room, office area and spacious en-suite bathroom. There are a further five double bedrooms (one acts as a family suite with bunk beds) and a twin bedroom with an extra bed suitable for a nanny. The bedrooms are beautifully appointed and most have access to a terrace or balcony.

One of the main highlights of this superb chalet has to be the incredible spa, complete with indoor/outdoor swimming pool, sauna and steam room. Outside, a Jacuzzi provides the perfect spot to unwind and enjoy the views. A playroom will keep the children occupied and there's a cinema room for further entertainment. Other facilities include a garage, laundry room and ski room.

Cinema/TV Room

Hot Tub

Sauna

Steam Room

Swimming Pool

Bar

Children's Playroom

Elevator

Fireplace(s)

Garage

Laundry Room

Sat/Cable TV

Ski Room

Sound System

Terrace/Balcony(ies)

Wi-Fi







