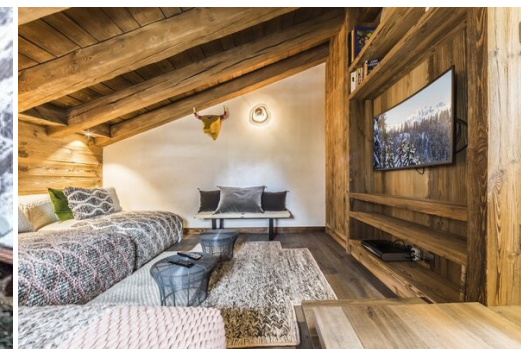


# This chalet has been beautifully redesigned in 2016

France, Val d'Isere

chalet - REF: TGS-A3627



Nº Bedrooms: 5

Fireplace

Ski Room

Nº Bathrooms: 5

Sauna

Cinema/tv room

Nº People: 10

Mountain view

Distance to ski lift: 500m

Parking

Air conditioning

Distance to centre: central

M² built: 350 m²

Dishwasher

Wifi

TV

Indoor pool

Washing machine

Heated Pool

Massage room

## Activities in resort

Skiing/Snowboarding

Cycling

Cross country skiing

Golf

Hiking

Mountain-Biking

Riding

Sailing

This chalet has been beautifully redesigned in 2016 and provides a truly exclusive experience in one of the most beautiful parts of the main village. The chalet is spread over four levels and an expansive 350sqm. The interiors are harmonious and modern and the five ensuite bedrooms are complemented by a sauna, a massage room and a beautiful indoor pool. If you are looking for contemporary living space that is beautifully finished then it would be an ideal choice.

Chalet was fully renovated in the autumn of 2016 and what has been delivered really leads the pack in terms of high spec finish and innovation in contemporary mountain living. Huge windows dominate a light and airy living room with a double height dining area and views across the Isère river. The outside of the chalet has been constructed of local stone and wood and reflects the serenity of this part of the village. The interiors are a perfect example of understated elegance, a long oak table cut from a single piece of wood forms a centre piece for the main living space and there are two separate tv and music snugs for relaxing and hiding away. Above the living space there is an iMac workspace and further reading area. Descending to the middle floor is the main sleeping area with four beautiful ensuite bedrooms one of which has a bath. Two of these bedrooms feature a terrace that opens onto the private garden. The lowest floor of the chalet holds a further 150sqm of floorspace consisting of an ensuite bedroom that overlooks the valley towards the gorge, a sauna, a massage room and a stunning pool and relaxation area. The main garage is also on this level where you will find the ski room and boot warmers.

We also have an in-house host who provides an exceptional concierge service and housekeeping to help you with the booking of ski tuition, guides, equipment or help with restaurant reservations. The chalet



comes with access to our 4x4 Landrover driving service and chauffeur, who also doubles as our go to person for snow and weather updates and lift openings.



