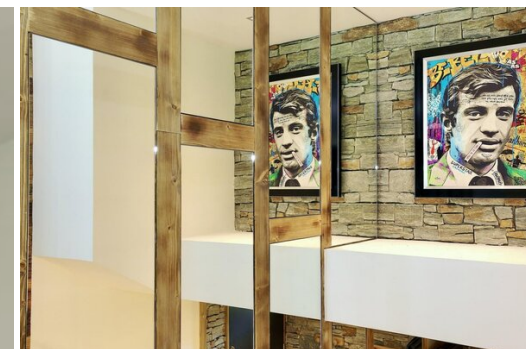


Completely renovated in 2022 THE CHALET in Courchevel 1650

France, Courchevel, Courchevel 1650

chalet - REF: TGS-A3643



N° Bedrooms: 3
Air conditioning

N° Bathrooms: 2
Dishwasher

N° People: 10
TV

N° parking's: 1
Washing machine

M² built: 110 m²
Ski Room

Wifi
Distance to centre: central

Fireplace

Mountain view

Activities in resort

Skiing/Snowboarding

Cycling

Cross country skiing

Golf

Hiking

Mountain-Biking

Riding

Completely renovated in 2022, THE CHALET in Courchevel 1650 is a semi-detached chalet ideally located in a quiet hamlet at the entrance to Courchevel 1650. You will be charmed by its unique panorama, giving a beautiful view of l'Aiguille du Fruit.

With a surface area of 110 sqm, this tastefully decorated property brilliantly combines modernity and mountain tradition. Extending over 3 levels, the property has two family suites with bathroom, a double bedroom en suite and, on the top floor, a bright living room with steam fireplace, open kitchen and long balcony overlooking the Ecrin Blanc and Courchevel Moriond.

"The end of the day is already here. While this evening's dish is simmering, you enjoy of a moment of calm to admire the village of Courchevel Moriond, on which the sun is setting. And in the distance, one of the most beautiful summits of the 3 Vallées. Time is good in Courchevel."



