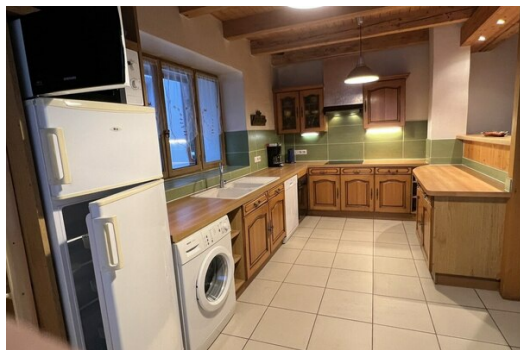


Courchevel Le Praz / Resort Centre Detached house

France, Courchevel, Courchevel 1300

chalet - REF: TGS-A3735



N° Bedrooms: 3
Dishwasher

N° Bathrooms: 3
TV

N° People: 6
Washing machine

M² built: 98 m²
Distance to ski lift: 100m

Terrace
Distance to centre: central

Wifi

Fireplace

Mountain view

Activities in resort

Skiing/Snowboarding

Cycling

Cross country skiing

Golf

Hiking

Mountain-Biking

Riding

DETACHED 3-BEDROOM CHALET, LOCATED IN THE TRADITIONAL HAMLET OF "FONTANIL", A STONE'S THROW FROM THE FREE SHUTTLE BUS STOP FOR COURCHEVEL - 5 MINUTES BY BUS FROM THE COURCHEVEL LE PRAZ SKI LIFTS.

A bright 4-room chalet with 98 m² of living space and a fireplace to warm up your après-ski evenings!

Ground floor:

Large living room with balcony and fireplace opening onto a large, fully equipped kitchen.

1st level :

- 1st en-suite bedroom: 2 single beds with its own shower room and balcony.

- 2nd en-suite bedroom: 2 single beds with washbasin and shower.

- Master bedroom: 1 double bed with en-suite bathroom and toilet.

1 separate toilet

Additional 4G Wifi connection (5GB/day)

Parking available 100 metres from the house.

RENTAL CONDITIONS :

Bed linen included

Towels and end-of-stay cleaning not included and on request.

Deposit required on arrival.

Supplement for pets: €25 per pet per stay up to a limit of two pets.



