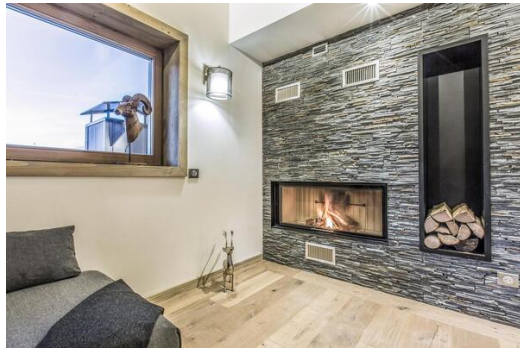


Penthouse, in Courchevel 1650 Moriond - 337 m²

France, Courchevel, Courchevel 1650

Penthouse - REF: TGS-A2276



N° Bedrooms: 5

Mountain view

N° Bathrooms: 5

Communal lift

N° People: 11

TV

Parking

Washing machine

M² built: 337 m²

Ski Room

Wifi

Distance to ski lift: 100m

ski-in/ski-out

Distance to centre: central

Communal SPA

Activities in resort

Skiing/Snowboarding

Cycling

Cross country skiing

Golf

Mountain-Biking

Riding

Information Penthouse, in Courchevel 1650 Moriond

- N° of people: 11
- M² built: 337 m²
- Terrace
- 5 Bedrooms
- 5 Bathrooms
- Parking
- Wifi
- Chimney
- Ski-room
- Ski In, Ski Out

The penthouse, located on the 5th floor of the Residence, with a surface area of 292 sqm, is perfect to welcome up to 11 people.

This penthouse has four bedrooms with double bed, a bedroom like a dormitory with three single beds as well as four bathrooms. The bright living room with a TV and a fireplace has also a fully equipped kitchen and a dining area. You will also appreciate the large south-facing balcony with a panoramic view over the Courchevel's peaks. For your comfort, this apartment has a private lift and a washing machine / clothes dryer.

During your holidays, you can benefit from a parking space in the private car park, a ski locker and Wi-Fi access.

Personalised services

Your well-being is our main priority, forget about constraints and everyday life and treat yourself to a perfect holiday courtesy of our huge range of useful services both included or à la carte.

- Customized welcome
- Concierge service
- L'Occitane beauty products
- Bistrot Le C - restaurant and bar
- Gilbert Sports - ski-room and ski-shop
- Underground private car park
- Ski lockers

