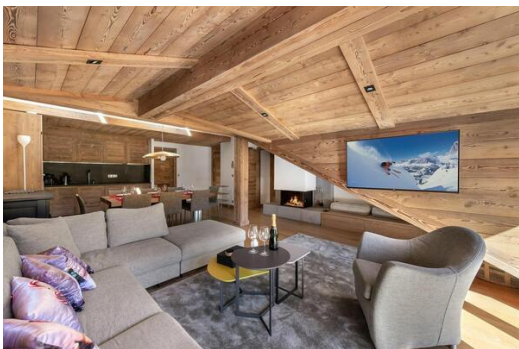
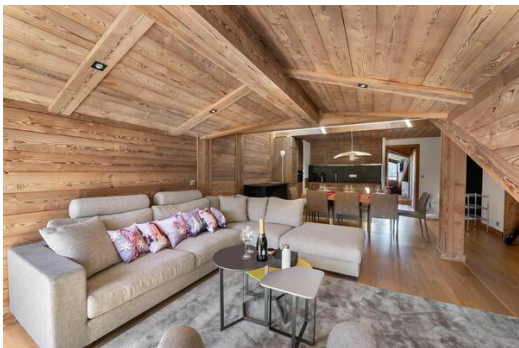


In the heart of Courchevel 1650 Moriond, this penthouse

France, Courchevel, Courchevel 1650

Penthouse - REF: TGS-A2499



N° Bedrooms: 3
Fireplace

N° Bathrooms: 3
Communal lift

N° People: 8
Dishwasher

Parking
TV

M² built: 103 m²
Washing machine

Floor: 7
Ski Room

Wifi
Distance to ski lift: 100m

ski-in/ski-out
Distance to centre: central

Information Apartment in Courchevel 1650 Moriond

- N° of people: 8
- M² built: 103 m²
- 3 Bedrooms
- 3 Bathrooms
- Parking
- Floor penthouse
- Wifi
- Chimney
- Ski-room
- Ski In, Ski Out

In the heart of Courchevel Moriond, this splendid penthouse of 103 sqm is located on the 7th and last floor of a residence. It benefits from a close proximity to the shops, the ski school, the slopes and ski lifts.

- Distance from the center : 50 m
- Closest ski slope : Cèpes
- Distance from the slopes : 0 m
- Distance to ski school : 200 m
- Closest ski lift : Le Petit Moriond
- Distance from ski lift : 0 m

It can accommodate up to 6 adults and 2 children, and has 3 beautiful bedrooms all ensuite and a mountain corner with two sleepings.

A superb living room with a friendly atmosphere completes this property thanks to its fully equipped kitchen, its lounge area and its beautiful fireplace and finally its dining area.

You will also have a ski locker to facilitate the end of your days skiing down the slopes.

The apartment is the ideal property for stays with friends or for family vacations.

Living area :

- Balcony
- Fireplace
- Fully fitted kitchen
- Lounge area
- Dining area

Bedroom :

- Chest of drawers, TV
- 1 Double bed (180 x 200)
- Ensuite bathroom : Bidet, Double sink , Shower, Toilet

Bedroom :

- Dressing , TV
- 1 Double bed (160 x 200)
- Ensuite bathroom : Shower, Single sink

Bedroom :

- Dressing , TV
- 1 Double bed (160 x 20)
- Ensuite bathroom : Shower, Single sink

Corner area :

- 1 Bunk bed (two sleeps) (90 x 190)

Independent toilets : 2

SERVICES

Welcome

- Reception in agency
- Champagne*
- Flowers*
- Bathroom products

Housekeeping & Linens

- Slippers
- Linens (towels and sheets)
- Beds made before arrival
- End of stay cleaning
- Scheduled cleaning on request (additional fee)

**Only winter*

EQUIPMENTS

Multimedia

- Cable TV
- Wifi
- TV

General equipments

- Elevator
- Wood fireplace
- Ski locker
- Parking space

Household appliance

- Microwave
- Microwave & oven combination
- Fridge
- Freezer
- Vacuum
- Ironing board
- Nespresso coffee machine
- Iron
- Kitchen exhaust hood

- Kettle
- Toaster
- table vacuum cleaner
- Induction hobs
- Dishwasher

On request

- Baby cot
- High chair





